

# BUSINESS INSTANT LIGHTING DISCOUNTS (BILD)



The customers' business site must be within Clark Public Utilities' service area. Eligible customer install site(s) must have a commercial or industrial electric meter within one of the Clark county zip codes below. Products receiving discounts through the BILD program are not eligible to receive incentives through other utility programs. Products are required to be installed as 1 for 1 replacement within 90 days of invoice date. Available for existing structures only; new construction or residential sales are not allowed for this program. Utility incentives are subject to change at any time.

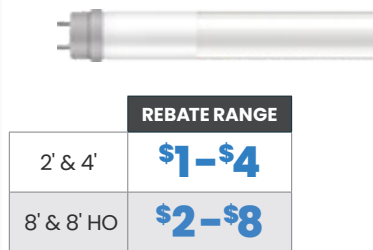
MEASURE	INCENTIVE
T8 4ft Type A	<b>\$2<sup>00</sup></b>
T8 4ft Type A+B	<b>\$4<sup>00</sup></b>
T8 4ft Type B	<b>\$4<sup>00</sup></b>
T8 4ft Type C	<b>\$4<sup>00</sup></b>
T8 4ft Linear Kit	<b>\$4<sup>00</sup></b>
T8 2ft Type A	<b>\$1<sup>00</sup></b>
T8 2ft Type A+B	<b>\$2<sup>00</sup></b>
T8 2ft Type B	<b>\$2<sup>00</sup></b>
T8 2ft Type C	<b>\$2<sup>00</sup></b>
T8 2ft Linear Kit	<b>\$2<sup>00</sup></b>
T8 8ft Type A	<b>\$2<sup>00</sup></b>
T8 8ft Type A+B	<b>\$4<sup>00</sup></b>
T8 8ft Type B	<b>\$4<sup>00</sup></b>

MEASURE	INCENTIVE
T8 8ft Type C	<b>\$4<sup>00</sup></b>
T8 8ft Linear Kit	<b>\$4<sup>00</sup></b>
T8HO 8ft Type A	<b>\$6<sup>00</sup></b>
T8HO 8ft Type A+B	<b>\$8<sup>00</sup></b>
T8HO 8ft Type B	<b>\$8<sup>00</sup></b>
T8HO 8ft Type C	<b>\$8<sup>00</sup></b>
T8HO 8ft Linear Kit	<b>\$8<sup>00</sup></b>
T5 4ft	<b>\$4<sup>00</sup></b>
T5HO 4ft	<b>\$6<sup>00</sup></b>
HID <60W Ballast Compatible	<b>\$20<sup>00</sup></b>
HID <60W Ballast Bypass	<b>\$20<sup>00</sup></b>
HID ≥60W Ballast Compatible	<b>\$50<sup>00</sup></b>
HID ≥60W Ballast Bypass	<b>\$50<sup>00</sup></b>

ELIGIBLE ZIP CODES		
98601	98662	98682
98604	98663	98683
98606	98664	98684
98607	98665	98685
98622	98666	98686
98629	98667	98687
98642	98668	
98660	98671	
98661	98675	

LAMP TYPES	
<b>A</b>	Insta-fit or ballast compatible
<b>B</b>	Ballast Bypass
<b>A/B</b>	Can be used with either technology above
<b>C</b>	uses a compatible LED driver only - Ballasts will not work with these

## T8 LED



## T5 LED, T5 & T5HO



## HID LED REPLACEMENT



## HID LED REPLACEMENT

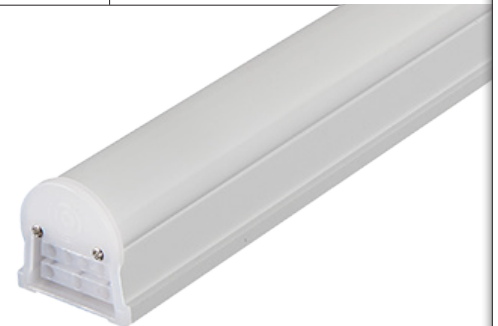


## HID LED REPLACEMENT



## LED LINEAR KIT

ITEM#	LENGTH	REBATE
#1448489	2'	<b>\$2</b>
#1448416	4'	<b>\$4</b>



Electrical Supplies | Services | Solutions

1-800-257-5288

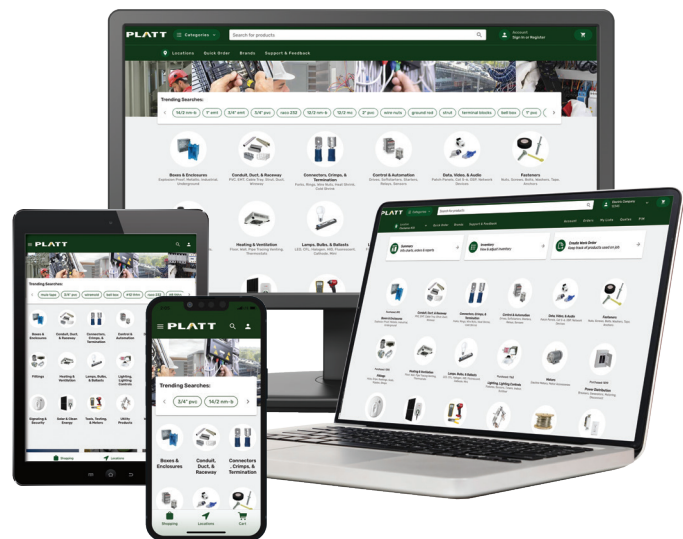
PLATT.com | PLATT App

Your Fully Stocked, Full Service, Electrical Supplier

# PLATT

**CONTROL & AUTOMATION · DATACOMM · ELECTRICAL · ENERGY SOLUTIONS  
LIGHTING · TOOLS · UTILITY & MEDIUM VOLTAGE · VIDEO SURVEILLANCE**

- The Brands You Trust at the Prices You Want
- Fast & Friendly Service
- +120,000 Items in Stock
- +135 Locations Throughout the West
- Overnight/Everyday™
- Industry Leading Website and Mobile App



**Anytime. Anywhere. Any Device.**

## SOLUTIONS & SERVICES

- 24 Hour Will Call Lockers
- Material Services
- Inventory Management



**PLATT**  
Electrical Supplies | Services | Solutions

**1-800-257-5288**  
**PLATT.com | PLATT App**