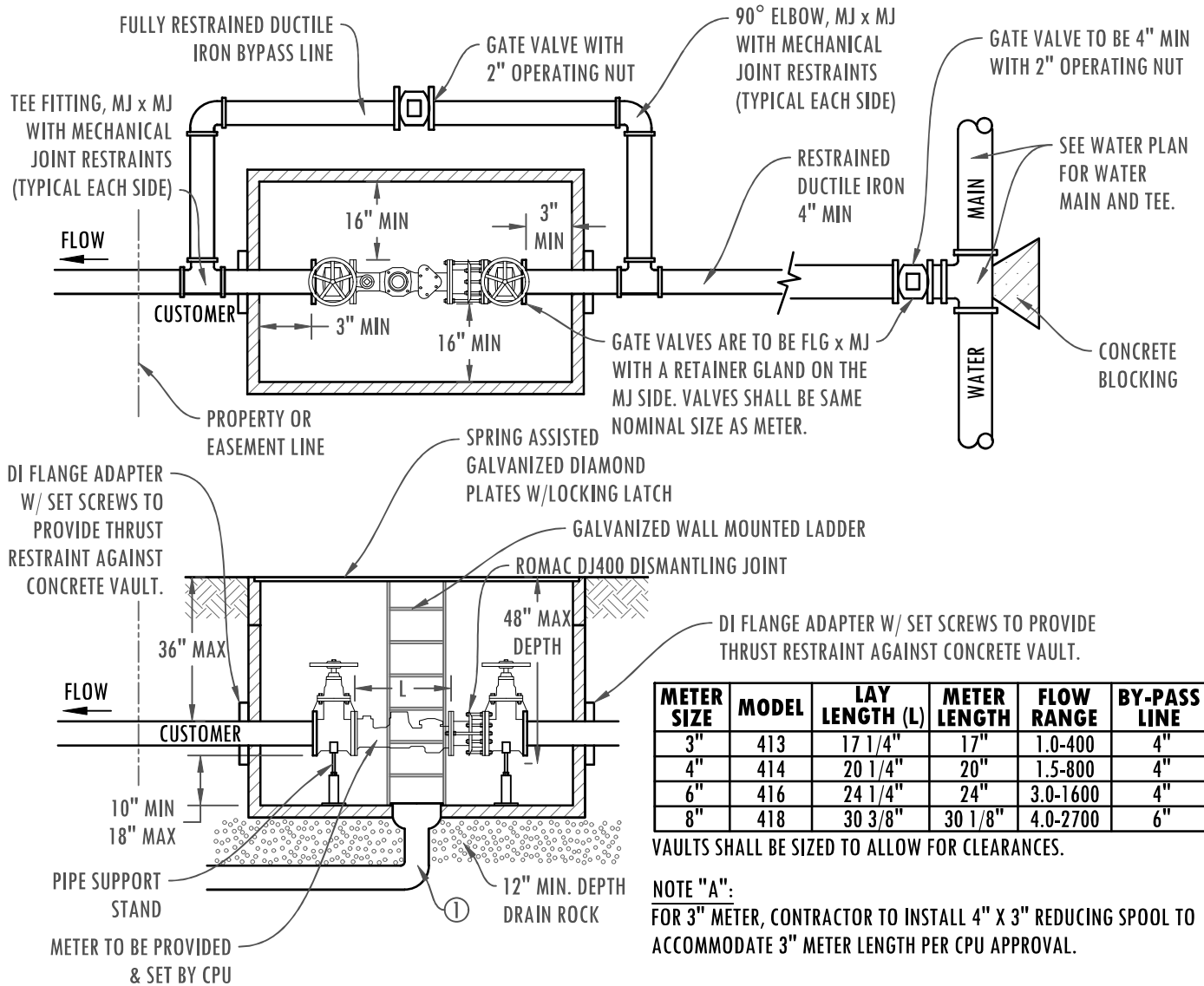


**ALL METERS SHALL BE INSTALLED  
BY CLARK PUBLIC UTILITIES**



**NOTE:**

- ALL JOINTS SHALL BE RESTRAINED FROM THE MAIN LINE TEE TO THE BYPASS TEE DOWNSTREAM OF THE METER TO PROVIDE FOR METER REMOVAL. PIPE MATERIAL SHALL BE DUCTILE IRON.
- PRIOR TO METER INSTALLATION, GATE VALVES SHALL BE ALIGNED & SPACED W/ RIGID SPOOL (DRILLED WITH HOLES SO AS NOT TO ALLOW WATER PASSAGE). CONTACT CPU WATER UTILITY FOR DISTANCE BETWEEN METER GATE VALVES PRIOR TO INSTALLATION. (360-992-8022)
- TEN PIPE DIAMETERS OF STRAIGHT PIPE REQ'D. IN & OUT OF METER.
- INSTALL VAULT IN SOFT-SCAPE AREA, VERTICALLY FLUSH WITH CURB OR SIDEWALK.
- IF VAULT MUST BE LOCATED IN A WALKING AREA, A NON-SKID TRAFFIC RATED LID SHALL BE REQUIRED.

**VAULT**

VAULTS SHALL BE PRE-APPROVED PRIOR TO INSTALLATION  
OLDCASTLE PRECAST VAULTS (OR APPROVED EQUAL):

3" & 4": #575-LA  
6" & 8": #676-WA

- ① A 4-INCH DRAIN LINE SHALL BE EXTENDED TO AN APPROVED DRAINAGE OUTLET. IN LOCATIONS W/ NO FEASIBLE DRAINAGE SYSTEM, DRAIN MAY BE CONNECTED TO A CPU APPROVED DRYWELL SYSTEM.

REVISED JANUARY 2025

<b>FILE NAME</b>		<b>3", 4", 6" AND 8" STANDARD METER INSTALLATION DETAILS</b>	
<b>3W</b>			
<b>SHEET</b>	<b>1 OF 1</b>	<b>STANDARD DETAILS</b>	