

Trees and Shrubs

Plant safe and smart around
electrical equipment



**Tips for planting
trees and shrubs
near Clark Public
Utilities power lines**



Our tree management program



Falling trees and limbs, branches growing into power lines and other tree-related problems cause a significant number of outages in Clark County. That's why Clark Public Utilities operates a year-round tree-pruning program based on guidelines promoted by the International Society of Arboriculture and the National Arbor Day Foundation.

Our crews prune trees back far enough so the power lines are free of tree contact until the next pruning cycle. We also consider the shape and size of each tree before we trim, as well as the proximity to the power line. Along rural and heavily wooded lines, we side trim or remove trees to establish a 10-foot right-of-way corridor for the power lines. We use side trimming and directional trimming in residential areas to prune trees away from power lines. These techniques involve removing limbs and redirecting future growth away from the power lines.

We know that maintaining trees for power line clearance doesn't always improve their appearance, but these pruning methods help protect the tree's health and minimize regrowth. Selectively pruning branches retains as much of the tree's natural crown or leaf canopy as possible.

We try to prevent as many tree-related outages as we can, but we need your help. To schedule a tree assessment with a utility Arborist, please call us at 360-992-3000 or request a tree trimming on our website.

Plant safe and smart around electrical equipment

Prevent outages with smart planting

Clark Public Utilities maintains thousands of miles of overhead power lines and trees by far are the biggest obstacle. Trees that are too tall and located too close to power lines cause about 25 percent of all outage hours in Clark County.

But you can help prevent these kinds of problems by carefully choosing what kind of trees you plant. If you're considering new landscaping near your home, we can help point you in the right direction.

Call before you dig

All kinds of utility lines run underground, including electric, cable, water and gas lines. Every year, dozens of Clark County residents accidentally dig into these lines and cause outages. In addition to the danger, it's also an expensive mistake, since those who do the digging have to pay for the repairs. There's an easy way to prevent this problem. Just call 811 or 1-800-425-5555 two working days before you plan to do any digging, and representatives of each utility will come and mark the locations of their underground lines for you. This is a FREE service.

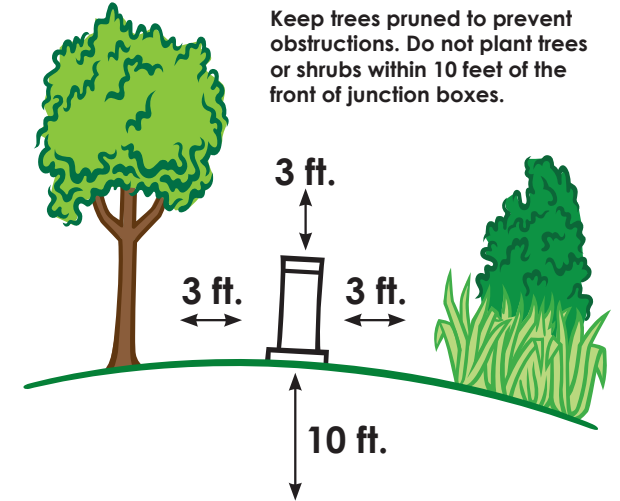
Trenching near trees can cause problems, but with adequate precautions most damage and tree loss can be prevented. In most tree species, 85 percent of the roots are within the first 18 inches of topsoil. Try to keep ditch lines and trenches as far from trees as practical, and dig no closer than the branches' drip-line.



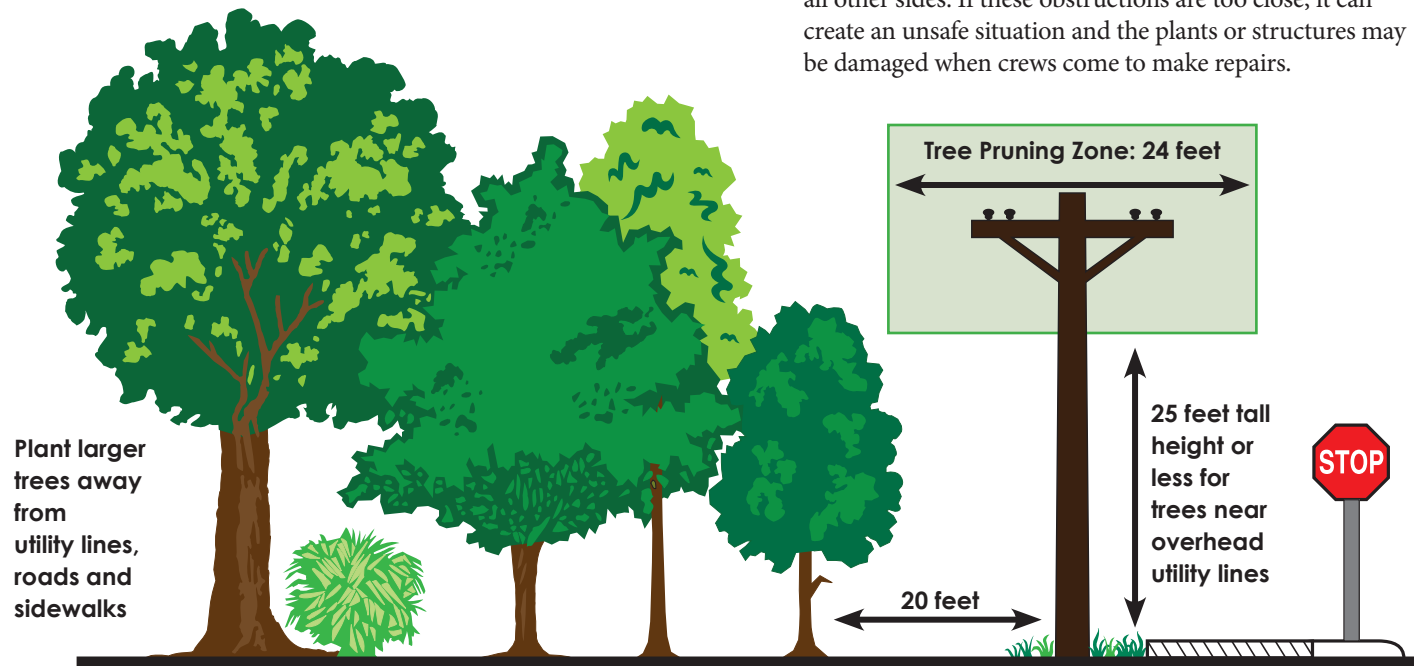
Planting near overhead lines

- Only plant trees under power lines that will grow to be no more than 25 feet tall. Small, round trees are best. Flowering trees, such as dogwoods and lilacs, are excellent choices. Trees with a single center trunk usually grow to lofty heights and shouldn't be planted near or under power lines. Examples of these "too tall" trees include large evergreens, poplars, maples, chestnuts and oaks.
- Plant trees and shrubs at least six feet away from utility poles — even farther if the tree or shrub is particularly bushy. Our crews need access to those poles, and trees and shrubs that are too close may be trimmed in the course of their work.
- If you're not sure the tree you're considering meets the criteria, ask a local landscape professional. You also can visit our website at www.clarkpublicutilities.com to get a recommended tree list and learn more about our tree maintenance program.

Planting near underground lines



If there are no overhead power lines in your neighborhood, you probably have a green utility box in your yard. This is a junction box and our crews need to access it when maintaining your underground electric service. Please don't plant shrubs or trees or build any structures within ten feet on the side with the lock, and three feet on all other sides. If these obstructions are too close, it can create an unsafe situation and the plants or structures may be damaged when crews come to make repairs.



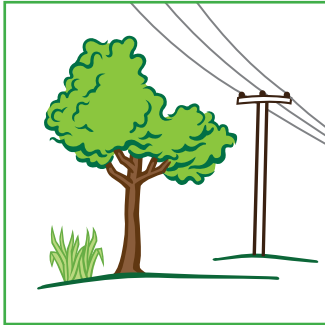
If you have any questions, call 360-992-3000 and speak with a Clark Public Utilities customer service representative. You can call for information 24 hours a day, seven days a week.

Common tree pruning techniques

These tree-trimming practices are promoted by the International Society of Arboriculture and the National Arbor Day Foundation.

Directional pruning

Branches are left to grow away from the wires.



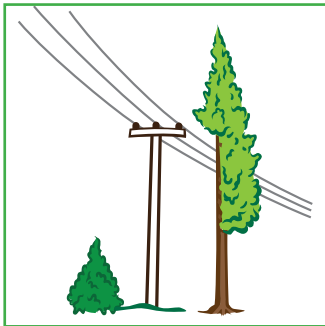
V-pruning

Branches are left to grow away from the wires.



Side pruning

Side branches are trimmed to the branch collar of the trunk.



Since 1999, Clark Public Utilities has been proud to be recognized annually as a TreeLine USA utility by the National Arbor Day Foundation, a testament to the ongoing commitment to keep Clark County both successful and beautiful.



Learn more at clarkpublicutilities.com or 360-992-3000

