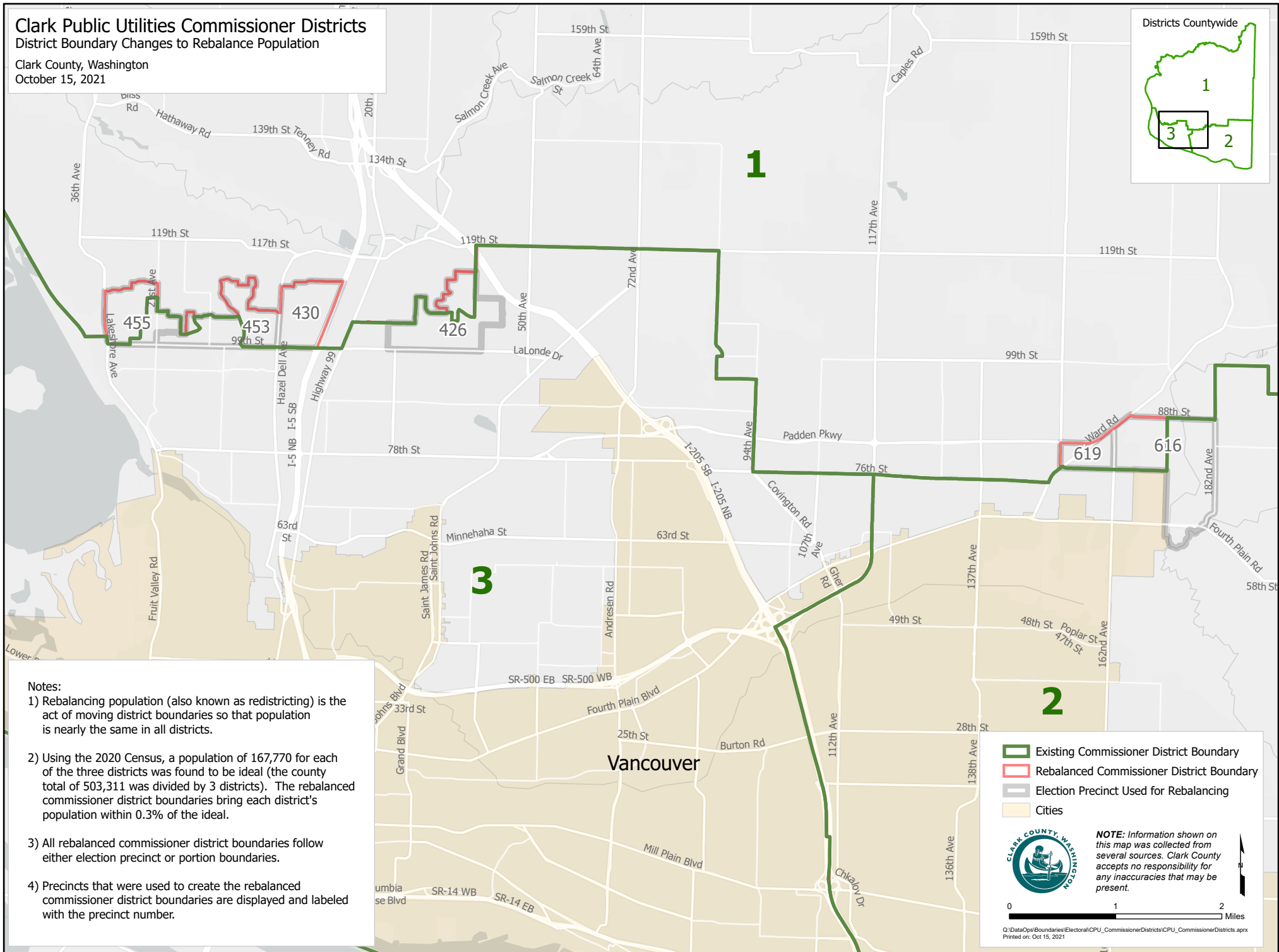
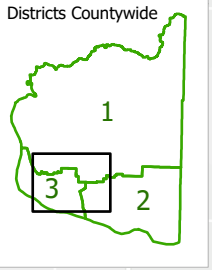


Clark Public Utilities Commissioner Districts

District Boundary Changes to Rebalance Population

Clark County, Washington
October 15, 2021



- Notes:**
- 1) Rebalancing population (also known as redistricting) is the act of moving district boundaries so that population is nearly the same in all districts.
 - 2) Using the 2020 Census, a population of 167,770 for each of the three districts was found to be ideal (the county total of 503,311 was divided by 3 districts). The rebalanced commissioner district boundaries bring each district's population within 0.3% of the ideal.
 - 3) All rebalanced commissioner district boundaries follow either election precinct or portion boundaries.
 - 4) Precincts that were used to create the rebalanced commissioner district boundaries are displayed and labeled with the precinct number.

- Existing Commissioner District Boundary
- Rebalanced Commissioner District Boundary
- Election Precinct Used for Rebalancing
- Cities

NOTE: Information shown on this map was collected from several sources. Clark County accepts no responsibility for any inaccuracies that may be present.

0 1 2 Miles

O:\Data\Ops\Boundaries\Election\CPU_CommissionerDistricts\CPU_CommissionerDistricts.aprx
Printed on: Oct 15, 2021