

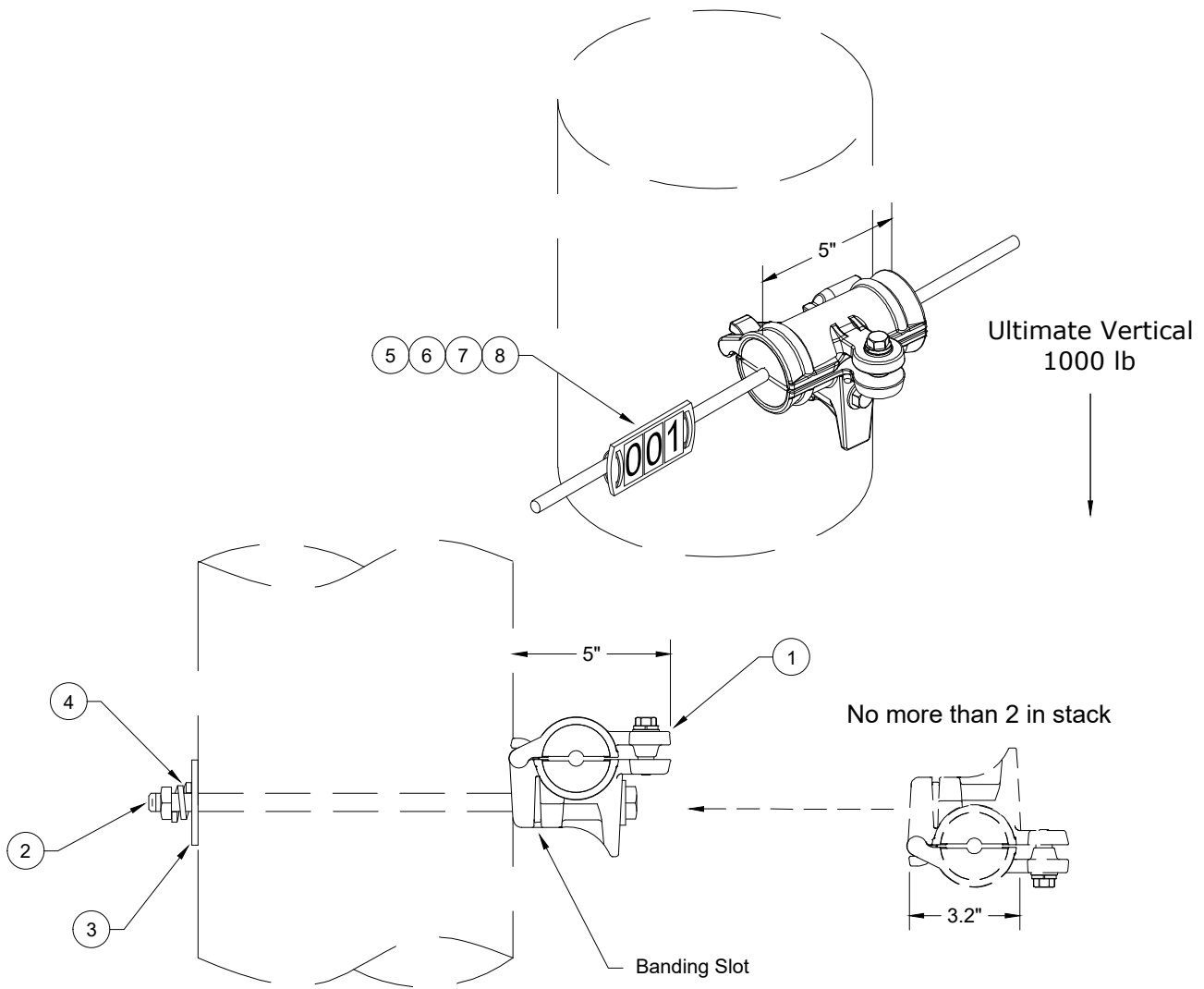
350

OVERHEAD FIBER OPTIC

12/23/2022

~	FO1	Tangent – 0° to 20°
~	FO2	Angle – 20° to 30°
~	FO3	Tangent – Fiberglass Arm
~	FO21	Storage Loop
~	FO42	Double Deadend Tangent
C	FO43	Double Deadend Angled
~	FOR	Riser

N New Standard
R Redrawn Standard
C Changed Standard
~ No Change



CPU fiber is top attachment in communication space

- Notes:**
1. Follow Joint Use Std JU2 - Pole Attachment Guidelines - Section 1910.
 2. Maximum span length is 450 feet.
 3. Call for additional support and 4" longer bolt when stacking.
 4. Banding slot is available for steel poles.
 5. Use Std FO1 for 48-count and Std FO1A for 96-count fiber.

5/8" Machine Bolt	
Length	S/N
16"	157
18"	158
20"	159
22"	160
24"	161

ITEM NO.	DESCRIPTION	48-Count		96-Count	
		FO1		FO1A	
		QTY.	S/N	QTY.	S/N
1	Support, Al, Thru-bolt, for ADSS fiber, 20° Max	1	3000	1	3001
2	Bolt, Machine, 5/8" x 14", Galv, 12,400 lb Ultimate Tensile	1	156	1	156
3	Washer, Curved, Square, Cast, Galv, 3" x 3" x 3/8" Thick x 13/16" Hole	1	1392	1	1392
4	Washer, Lock, Spring, Double Coil, Galv, 5/8"	1	2217	1	2217
5	Tag, "O" (& Zero), Character, 1"	2	2636	2	2636
6	Tag, "1", Character, 1"	1	2648	1	2648
7	Holder, Identification Tag, 4 Position	1	2588	1	2588
8	Wrap, Tie, Fluoropolymer, 7"	2	3022	2	3022



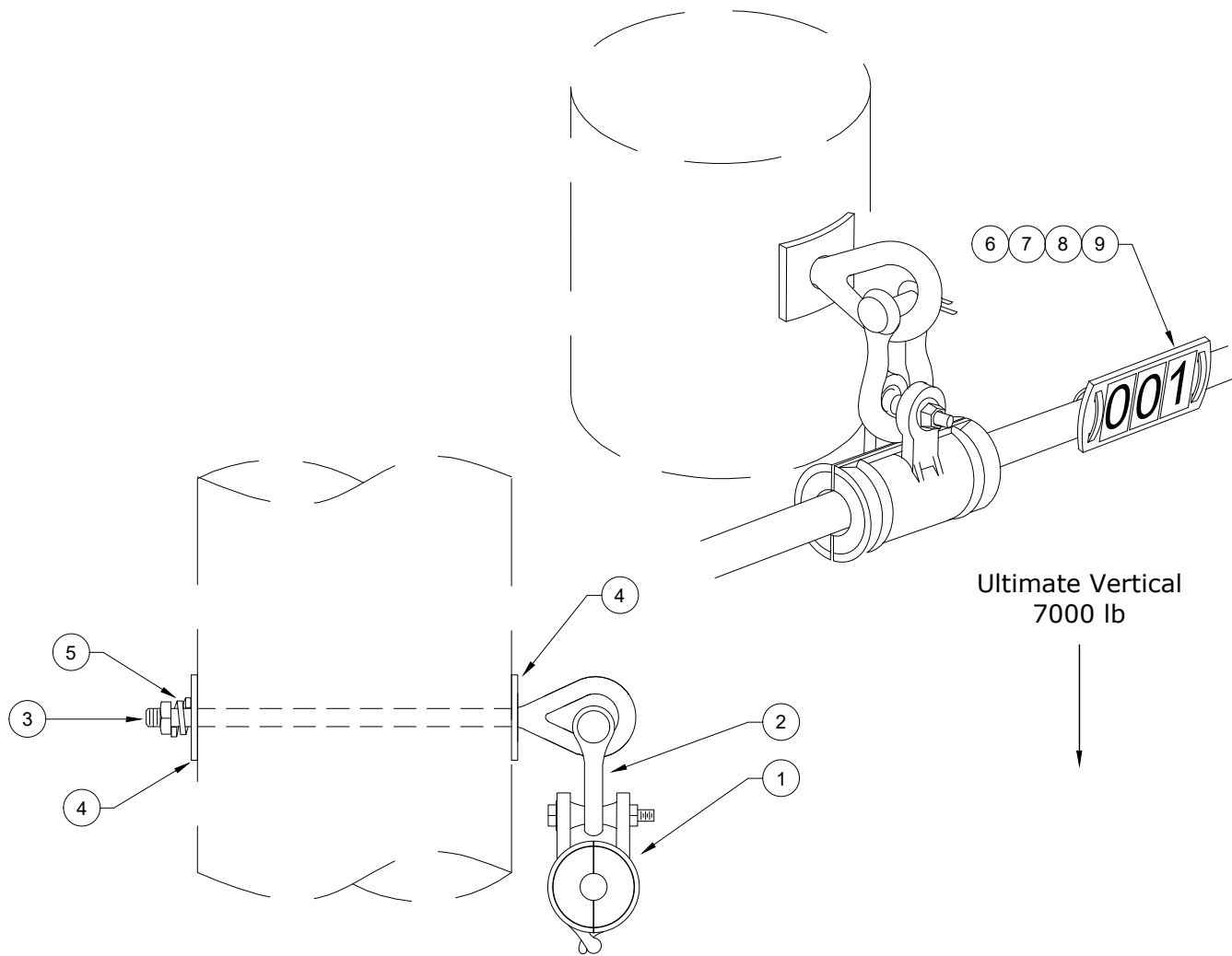
CONSTRUCTION STANDARDS
 FIBER OPTIC STACKABLE TANGENT SUPPORT
 0° to 20°
 ADSS FIBER

PAGE:
1 of 1

FO1,FO1A

CAD FILE:
FO1

REVISIONS		
DATE	ENGR	OPS
APP: KJP/DRK	SECTION	
DATE: 8/11/21	350	



CPU fiber is top attachment in communication space

- Notes:**
1. Follow Joint Use Std JU2 - Pole Attachment Guidelines - Section 1910.
 2. Maximum span length is 450 feet.
 3. Banding attachment is available for steel poles.
 4. Use Std FO2 for 48-count and Std FO2A for 96-count fiber.

ITEM NO.	DESCRIPTION	48-Count FO2		96-Count FO2A	
		QTY.	S/N	QTY.	S/N
1	Support, Al, Suspension, for ADSS fiber, 30° Max	1	3002	1	3003
2	Shackle, Anchor, Galv, 25,000 lb	1	3007	1	3007
3	Bolt, Eye, 5/8" x 14", Galv, 12,400 lb Ultimate Tensile	1	108	1	108
4	Washer, Curved, Square, Cast, Galv, 3" x 3" x 3/8" Thick w/ 13/16" Hole	2	1392	2	1392
5	Washer, Lock, Spring, Double Coil, Galv, 5/8"	1	2217	1	2217
6	Tag, "0" (& Zero), Character, 1"	2	2636	2	2636
7	Tag, "1", Character, 1"	1	2648	1	2648
8	Holder, Identification Tag, 4 Position	1	2588	1	2588
9	Wrap, Tie, Fluoropolymer, 7"	2	3022	2	3022

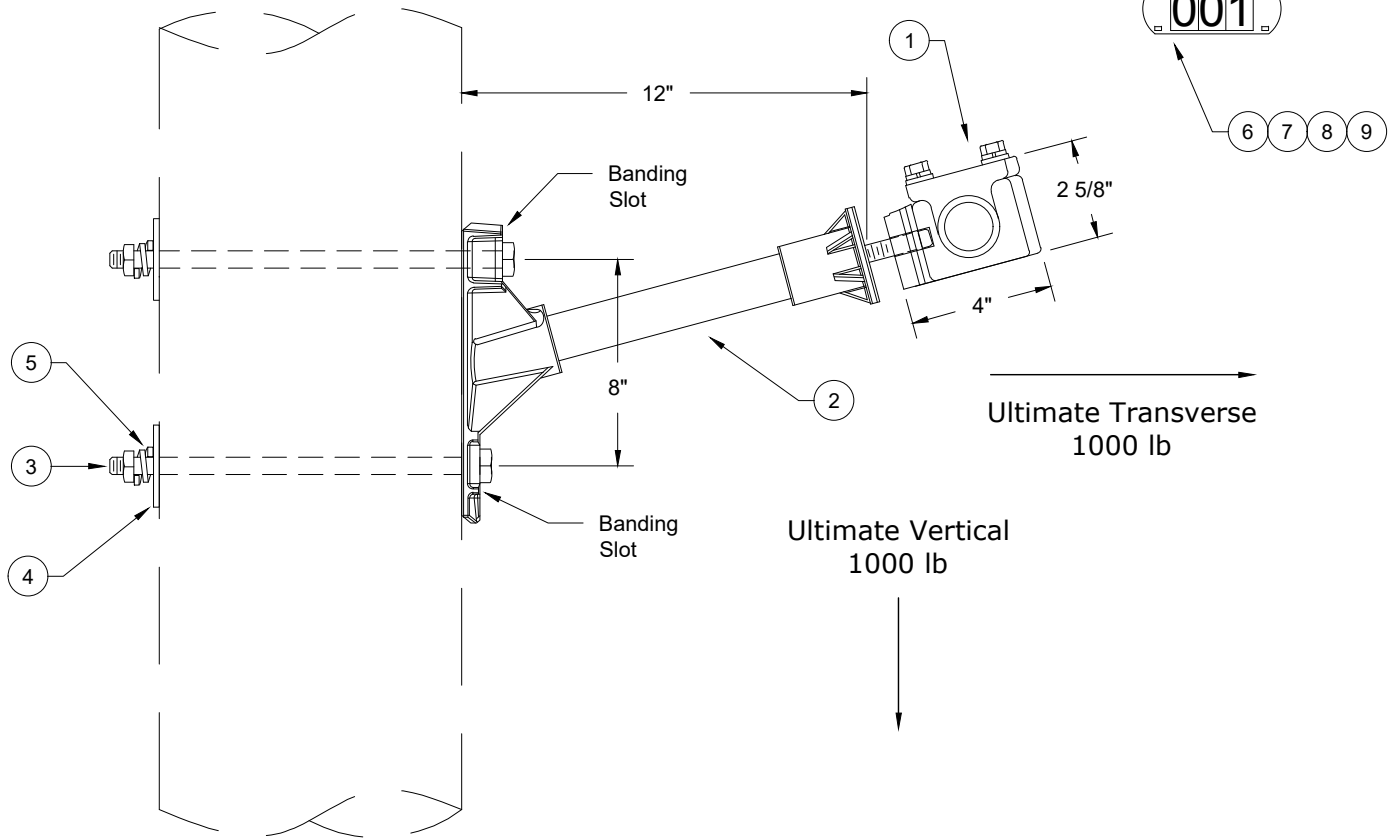


CONSTRUCTION STANDARDS
 FIBER OPTIC SUSPENSION SUPPORT
 0° to 30°
 ADSS FIBER

REVISIONS		
DATE	ENGR	OPS

Do NOT build a storage loop around arm.

Install "001" ID tag on fiber near support



CPU fiber is top attachment in communication space

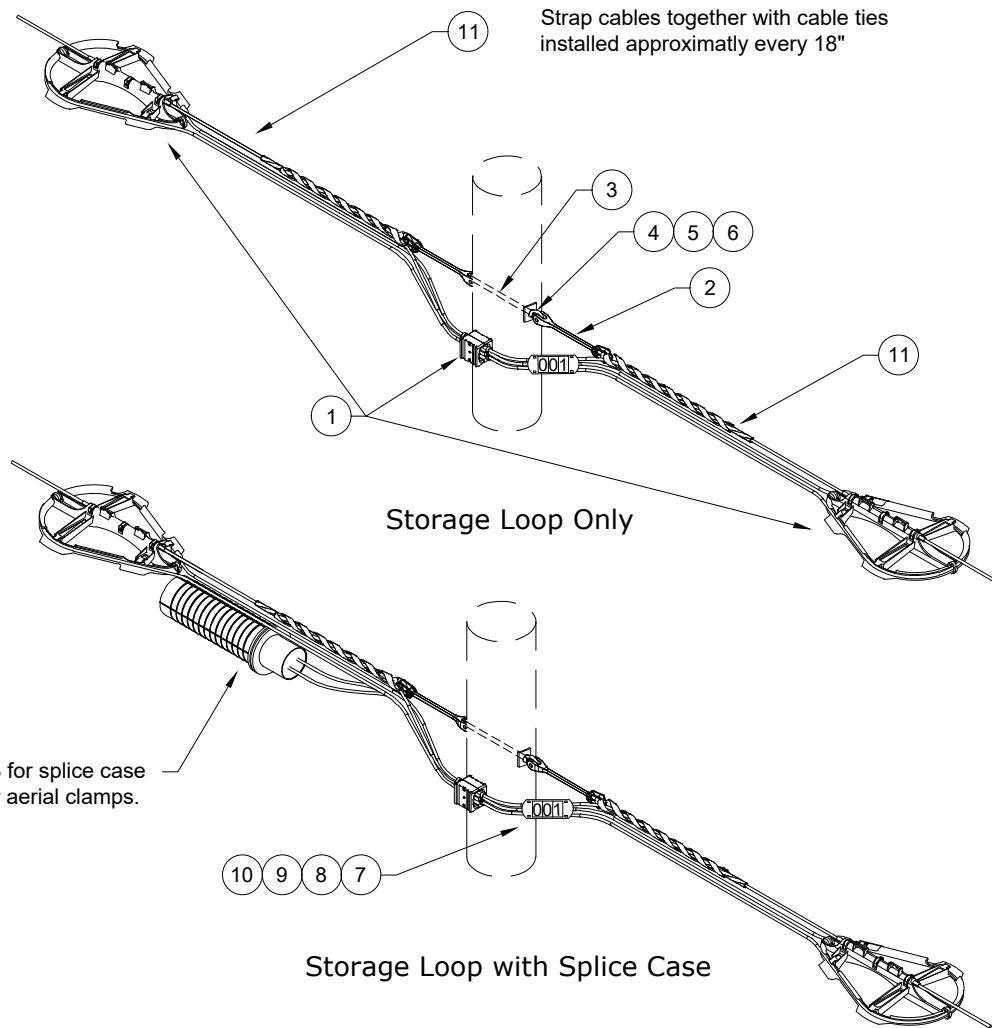
- Notes:**
1. Follow Joint Use Std JU2 - Pole Attachment Guidelines - Section 1910.
 2. Maximum span length is 450 feet.
 3. Banding slot is available for steel poles.
 4. Use Std FO3 for 48-count and Std FO3A for 96-count fiber.
 5. Ultimate Longitudinal Load = 1000 lb

ITEM NO.	DESCRIPTION	48-Count		96-Count	
		FO3		FO3A	
		QTY.	S/N	QTY.	S/N
1	Support, Dielectric, Arm, for ADSS fiber, 20° Max	1	3004	1	3005
2	Arm, Standoff, Fiberglass, 1.5" diameter, 12" long, 5/8" thread	1	3008	1	3008
3	Bolt, Machine, 5/8" x 14", Galv, 12,400 lb Ultimate Tensile	2	156	2	156
4	Washer, Curved, Square, Cast, Galv, 3" x 3" x 3/8" Thick w/ 13/16" Hole	2	1392	2	1392
5	Washer, Lock, Spring, Double Coil, Galv, 5/8"	2	2217	2	2217
6	Tag, "0" (& Zero), Character, 1"	2	2636	2	2636
7	Tag, "1", Character, 1"	1	2648	1	2648
8	Holder, Identification Tag, 4 Position	1	2588	1	2588
9	Wrap, Tie, Fluoropolymer, 7"	2	3022	2	3022



CONSTRUCTION STANDARDS
 FIBER OPTIC STANDOFF ARM
 0° to 20°
 ADSS FIBER

REVISIONS		
DATE	ENGR	OPS
APP: KJP/DRK	SECTION	
DATE: 8/11/21	350	



CPU fiber is top attachment in communication space

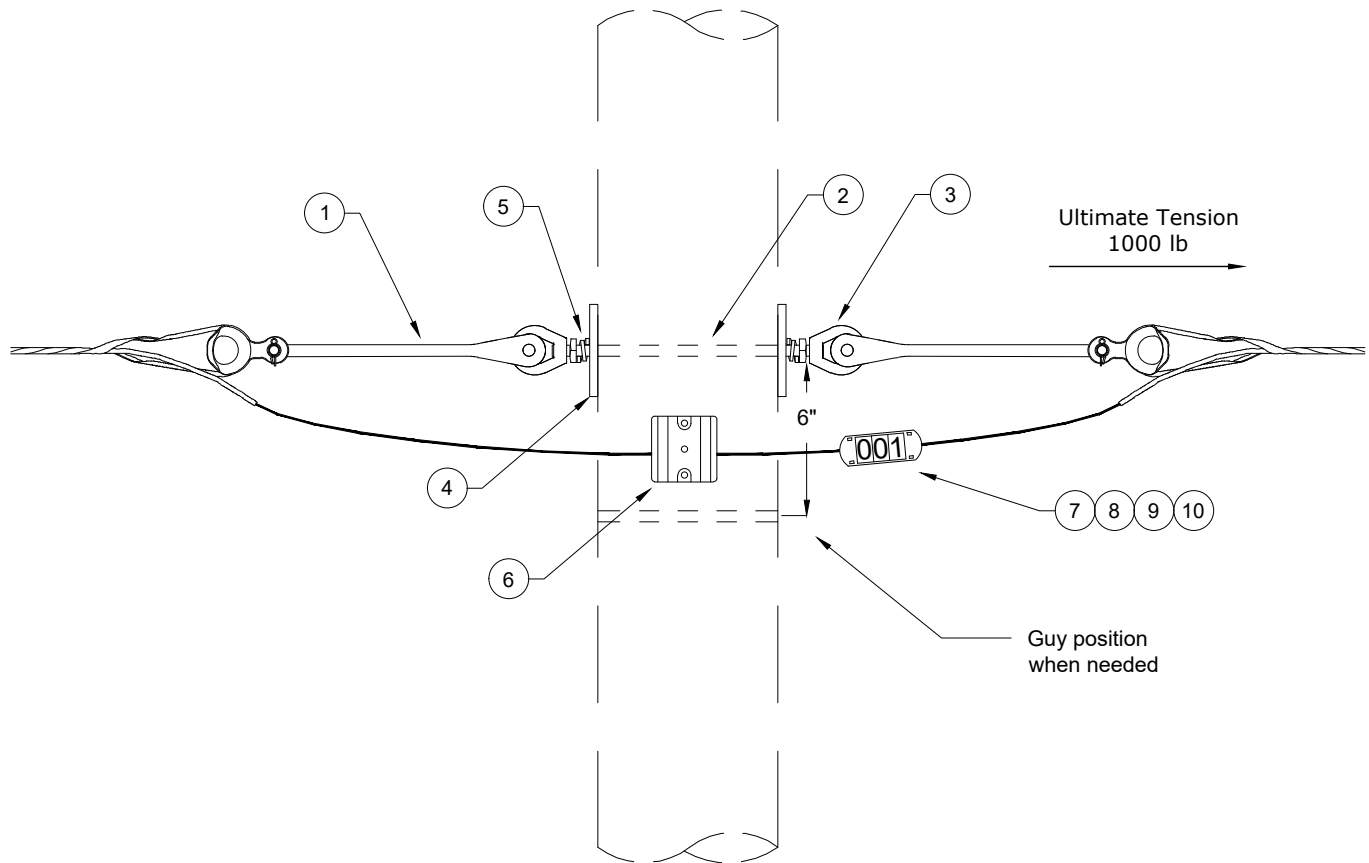
- Notes:**
1. Follow Joint Use Std JU2 - Pole Attachment Guidelines - Section 1910.
 2. Storage should be easily accessible by bucket truck.
 3. Length of fiber in storage to be at least 150 feet.
 4. Call separately for splice case (s/n 3013) and aerial clamps (s/n 3020).
 5. Use Std FO21 for 48-count and Std FO21A for 96-count fiber.

ITEM NO.	DESCRIPTION	48-Count		96-Count	
		FO21	FO21A	FO21	FO21A
		QTY.	S/N	QTY.	S/N
1	Storage Kit, Fiber, OH, includes 2 loop brackets, 1 cable guide	1	3011	1	3011
2	Deadend Assembly, for ADSS fiber	2	3009	2	3010
3	Bolt, Double Arm, 5/8" x 14", Galv, 12,000 lb Ultimate Tensile	1	2382	1	2382
4	Nut, Eye, Oval, 5/8", Galv	2	913	2	913
5	Washer, Curved, Square, Cast, Galv, 3" x 3" x 3/8" Thick w/ 13/16" Hole	2	1392	2	1392
6	Washer, Lock, Spring, Double Coil, Galv, 5/8"	2	2217	2	2217
7	Tag, "O" (& Zero), Character, 1"	2	2636	2	2636
8	Tag, "1", Character, 1"	1	2648	1	2648
9	Holder, Identification Tag, 4 Position	1	2588	1	2588
10	Wrap, Tie, Fluoropolymer, 7"	2	3022	2	3022
11	Wrap, Tie, Acetal, 13.5"	25	3023	25	3023



CONSTRUCTION STANDARDS
 FIBER OPTIC
 STORAGE LOOP
 ADSS FIBER

REVISIONS		
DATE	ENGR	OPS



CPU fiber is top attachment in communication space

- Notes:**
1. Follow joint use Std JU2 - Pole Attachment Guidelines - Section 1910.
 2. Maximum span length is 450 ft.
 3. Use Std FO42 for 48-count and Std FO42A for 96-count fiber.
 4. Call for guying separately if needed.

ITEM NO.	DESCRIPTION	48 Count		96 Count	
		FO42		FO42A	
		QTY.	S/N	QTY.	S/N
1	Deadend Assembly, for ADSS fiber	2	3009	2	3010
2	Bolt, Double Arm, 5/8" x 14", Galv, 12,000 lb Ultimate Tensile	1	2382	1	2382
3	Nut, Eye, Oval, 5/8", Galv	2	913	2	913
4	Washer, Curved, Square, Cast, Galv, 3" x 3" x 3/8" Thick w/ 13/16" Hole	2	1392	2	1392
5	Washer, Lock, Spring, Double Coil, Galv, 5/8"	2	2217	2	2217
6	Guide, Pole, for ADSS fiber	1	3021	1	3021
7	Tag, "O" (& Zero), Character, 1"	2	2636	2	2636
8	Tag, "1", Character, 1"	1	2648	1	2648
9	Holder, Identification Tag, 4 Position	1	2588	1	2588
10	Wrap, Tie, Fluoropolymer, 7"	2	3022	2	3022



CONSTRUCTION STANDARDS

FIBER OPTIC
TANGENT DOUBLE DEADEND
ADSS FIBER

PAGE:
1 of 1

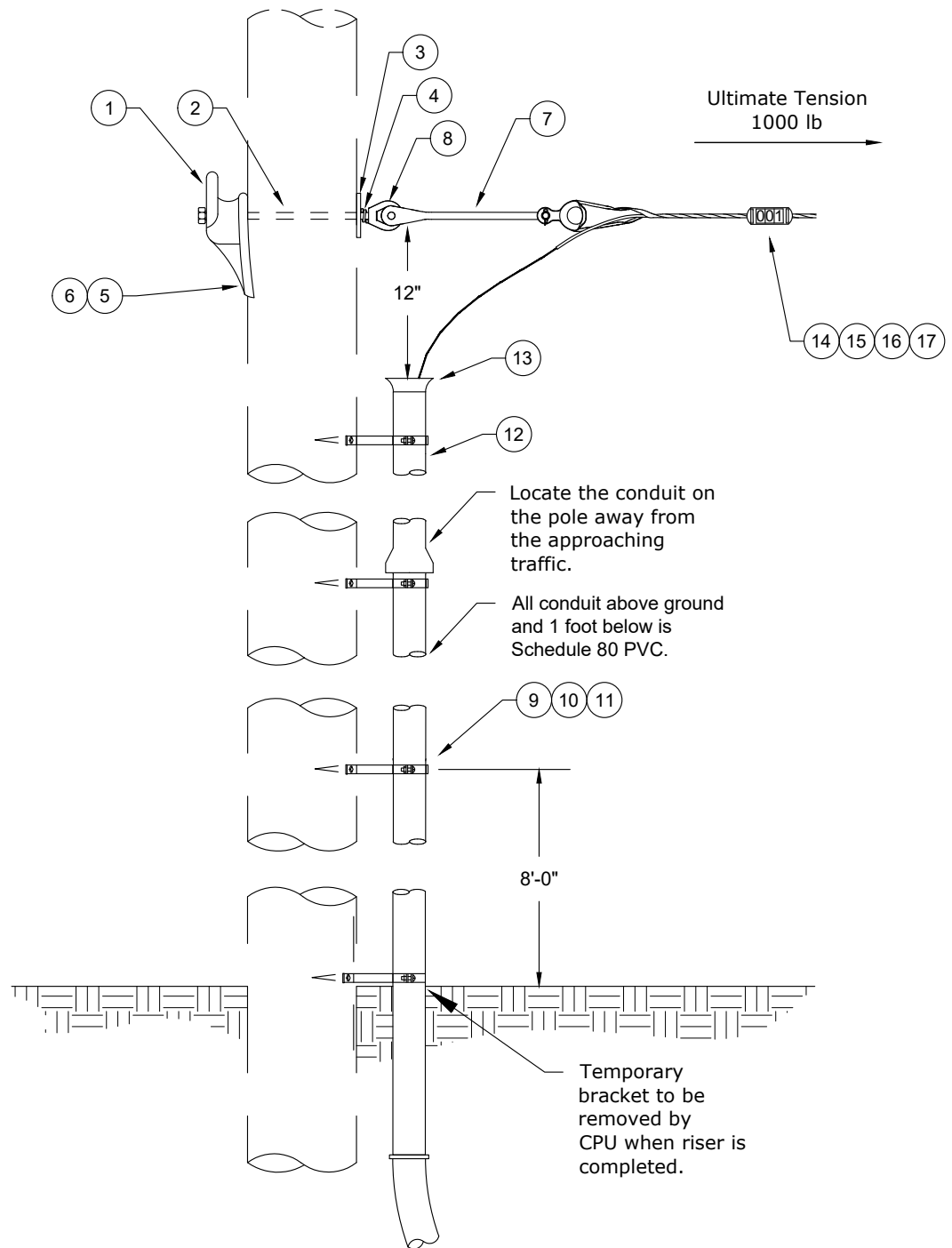
FO42,FO42A

CAD FILE:
FO42

REVISIONS		
DATE	ENGR	OPS

APP: KJP/DRK
DATE: 8/11/21

SECTION
350



CPU fiber is top attachment in communication space

- Notes:**
1. Follow joint use Std JU2 - Pole Attachment Guidelines - Section 1910.
 2. Maximum span length is 450 feet.
 3. Use Std FOR for 48-count and Std FORA for 96-count fiber.
 4. Call for downguy and anchor separately.



CONSTRUCTION STANDARDS

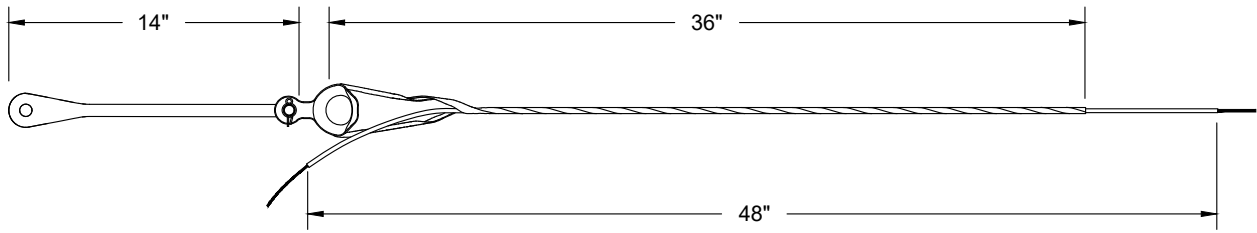
FIBER OPTIC
RISER
ADSS FIBER

PAGE:
1 of 2

FOR, FORA

CAD FILE:
FOR

REVISIONS		
DATE	ENGR	OPS
APP: KJP/DRK	SECTION	
DATE: 8/11/21	350	



Deadend Assembly Detail (Item #7)

ITEM NO.	DESCRIPTION	48 Count		96 Count	
		FOR		FORA	
		QTY.	S/N	QTY.	S/N
1	Hook, Guy, 25,400 lb Ultimate	1	753	1	753
2	Bolt, Machine 3/4" x 14", 18,350 lb Ultimate Tensile	1	174	1	174
3	Washer, Curved, Cast, 4" x 4" with 13/16" hole	1	1910	1	1910
4	Washer, Lock, Spring, Double Coil, Galv, 3/4"	1	2218	1	2218
5	Screw, Lag, 1/2" x 4 1/2", Twist Drive, Drive Point	1	1132	1	1132
6	Washer, Flat, Round, Galv, 1/2"	1	1394	1	1394
ITEM NO.	DESCRIPTION	Additional Material		Additional Material	
		QTY.	S/N	QTY.	S/N
7	Deadend Assembly, for ADSS fiber	1	3009	1	3010
8	Nut, Eye, Oval, 3/4", Galv	1	914	1	914
9	Screw, Lag, 1/2" x 3", Fetter Drive, Drive Point	6	1131	6	1131
10	Bracket, Standoff, 10 1/2", with Stop	3	226	3	226
11	Clamp, Standoff Bracket, 2" Conduit	3	295	3	295
12	Conduit, PVC, 2" X 10', Sch 80	30	2205	30	2205
13	End Bell, 2", Sch 40	1	2206	1	2206
14	Tag, "O" (& Zero), Character, 1"	2	2636	2	2636
15	Tag, "1", Character, 1"	1	2648	1	2648
16	Holder, Identification Tag, 4 Position	1	2588	1	2588
17	Wrap, Tie, Fluoropolymer, 7"	2	3022	2	3022



CONSTRUCTION STANDARDS

FIBER OPTIC
RISER
ADSS FIBER

REVISIONS			
DATE	ENGR	OPS	