

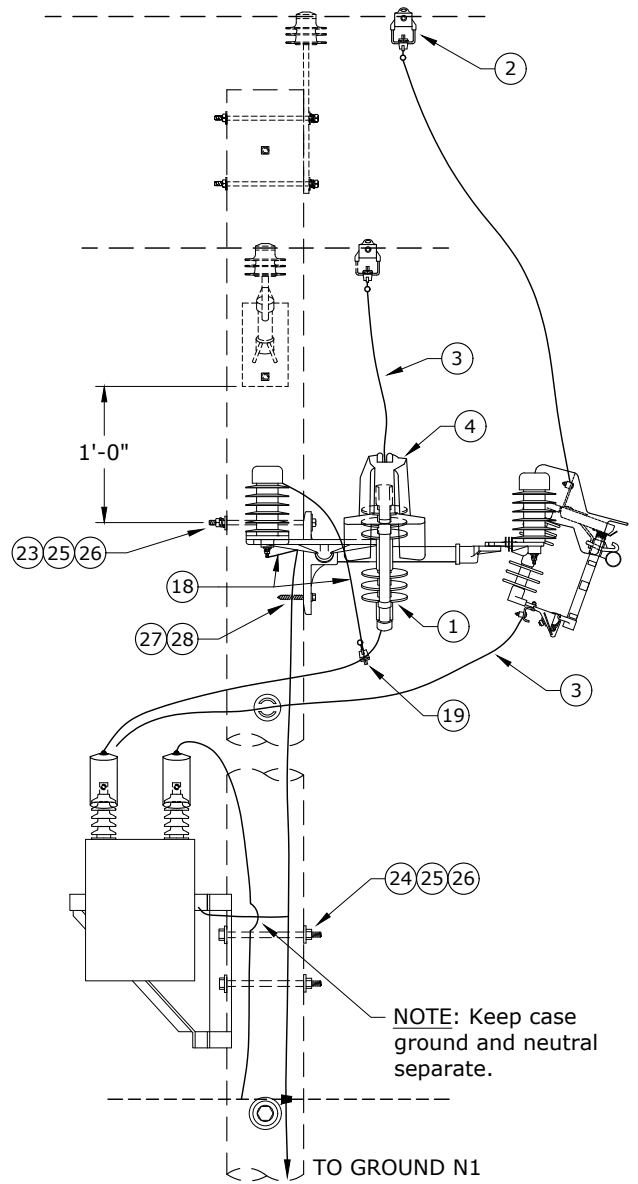
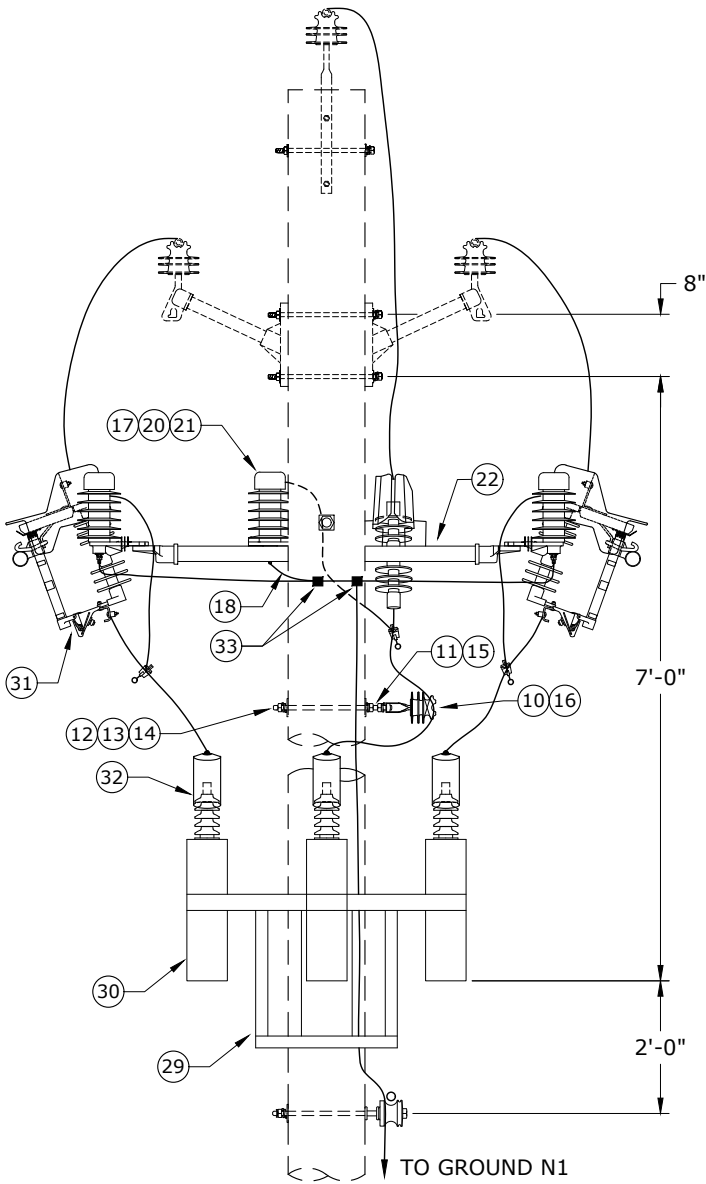
# 800

## LINE DEVICES

3/13/2023

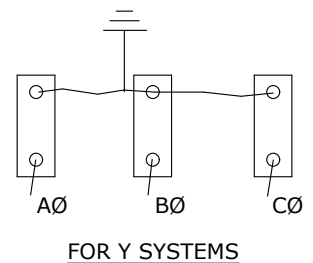
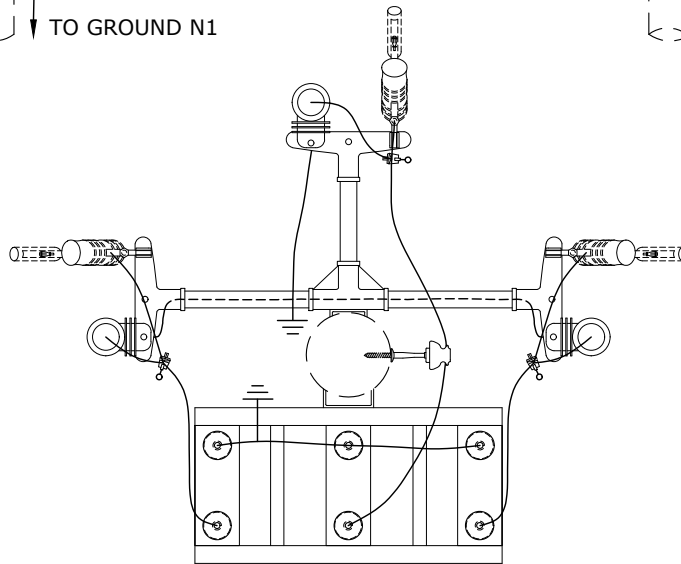
~	CA600	Capacitor Bank - 3 Units - 600kVAR
~	CF	Capacitor Fuse Schedule
~	CO1	Pole Mounting Bracket for Cutout & Lightning Arrester
~	CO3	Line Cutouts
~	CO100	Universal Cutout - 100 Amp
~	CO200	Universal Cutout - 200 Amp
~	OFI	Overhead Fault Indicators
~	R5	Three 1Ø Solid Dielectric Reclosers
~	R6	Three 1Ø Oil-Filled Reclosers
~	REG3	3Ø Regulator Installation
~	SW3	Pole Top Switch - Switch Number Location
<b>C</b>	SW6	3Ø Switch - Underslung - 900A

<b>N</b>	New Standard
<b>R</b>	Redrawn Standard
<b>C</b>	Changed Standard
~	No Change



NOTE: Keep case ground and neutral separate.

NOTE: Connect Arrester Grounds to Capacitor Mounting Bolts.



Rev 4: Changed to polymer cutout and material corrections.



# CONSTRUCTION STANDARDS

CAPACITOR BANK  
3 UNITS  
600 KVAR

REVISIONS			
Δ	DATE	ENGR	OPS
1	2/23/00	HWH	MA
2	2/6/15	CM	DK
3	3/11/20	KJP	
4	8/13/21	KJP	

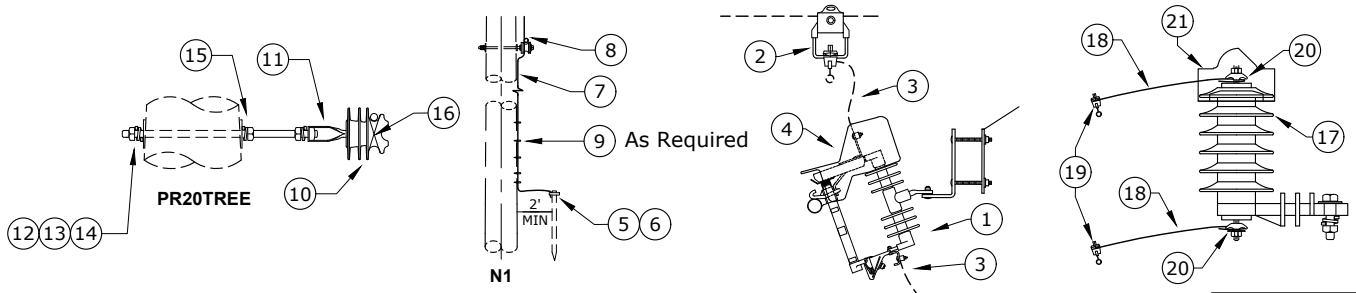
PAGE:  
1 of 2

## CA600

CAD FILE:  
CA600

APP: HWH/GW  
DATE: 1/22/80

SECTION  
**800**



Rev 4: Changed to polymer cutout and material corrections.

ITEM NO.	DESCRIPTION	CA600	
		QTY.	S/N
1	Cutout, Polymer, Universal, 100A, 16kA Asym	3	2532
2	Clamp, Hotline, GP1530, Line #6 Sol - 400MCM, Tap #6 Sol - 4/0 Str, Cu Only	3	284
3	Conductor, 600v, Cu, #4, 7-str, THW, Red	45	2512
4	Guard, Wildlife, Cutout, Polymer	3	2928
ITEM NO.	DESCRIPTION	N1	
		QTY.	S/N
5	Rod, Ground, 5/8" x 8'	1	1124
6	Clamp, Ground Rod, 5/8", Bronze, Small	1	281
7	Conductor, Cu-Clad Steel, #4 Cu Equiv	40	1512
8	Connector, H-Tap, Al/Cu, Run #2 - 2/0 Str, Tap #6 - #1 Str	1	413
9	Staple, Ground, Barbed, Galvanized, 1 1/2"	24	2707
ITEM NO.	DESCRIPTION	PR20TREE	
		QTY.	S/N
10	Insulator, Pin, 15kV, C-Neck, Polymer	1	1968
11	Pin, Adapter	1	959
12	Washer, Curved, Square, Cast, 3" x 3" x 3/8" Thick x 13/16" Hole	2	1392
13	Bolt, Double Arm, 5/8" x 16" Galv, 12,400 lb Ultimate	1	81
14	Washer, Lock, Spring, Double Coil, Galv, 5/8"	1	2217
15	Washer, Lock, Spring, Single Coil, Galv, 5/8"	2	1403
16	Wire, Tie, Al, #4 Sol w/ 45mil TPR Jacket	11	3012
ITEM NO.	DESCRIPTION	LA2 (3)	
		QTY.	S/N
17	Arrester, Surge, 9kV, MOV, Riser Pole	3	58
18	Conductor, 600v, Cu, #4, 7-Str, THW, Red, 1/C	21	2512
19	Clamp, Hotline GP 1520, Line & Tap #8 to 2/0 Str, Cu Only	6	283
20	Connector, Compression Lug, #4, Cu/Al, One-Hole, Tin-Plated, For Arrester	6	2548
21	Guard, Wildlife, Polymer Arrester	3	2583
ITEM NO.	DESCRIPTION	ADDITIONAL MATERIAL	
		QTY.	S/N
22	Bracket, Arrester/Cutout, 3Ø, 18" Fiberglass	1	2538
23	Bolt, Machine, 5/8" x 12", Galv. 12,400 lbs. Ultimate	1	155
24	Bolt, Machine, 5/8" x 14", Galv. 12,400 lbs. Ultimate	2	156
25	Washer, Curved, Square, Cast, 3" x 3" x 3/8" Thick x 13/16" Hole	3	1392
26	Washer, Lock, Spring, Double Coil Galv. 5/8"	3	2217
27	Screw, Lag 1/2" x 4 1/2", Twist Drive, Drive Point	1	1132
28	Washer, Square Flat, 5/8" x 2 1/4" x 2 1/4"	1	1412
29	Hanger, Rack 3 Unit Capacitor	1	732
30	Capacitor, 200kVAR, 7.2kV	3	1530
31	Fuse, "ELF", 8.3kV, 30A	3	1543
32	Guard, Wildlife, Transformer Bushing	6	721
33	Connector, Crimpet, Cu, 4C4, Run & Tap #6 Sol - #4 Str	4	450



## CONSTRUCTION STANDARDS

CAPACITOR BANK  
3 UNITS  
600 KVAR

PAGE:  
2 of 2

# CA600

CAD FILE:  
CA600

### REVISIONS

REV	DATE	ENGR	OPS
1	2/23/00	HWH	MA
2	2/6/15	CM	DK
3	3/11/20	KJP	
4	8/13/21	KJP	

APP: HWH/GW  
DATE: 1/22/80

SECTION  
**800**

## CAPACITOR LINE CURRENT AND FUSE SCHEDULE

CAUTION: CAPACITORS MUST BE GROUNDED AFTER THEY ARE  
DE-ENERGIZED BECAUSE THEY WILL STAY CHARGED  
FOR A LONG TIME.

### NEW BANKS


KVAR UNIT SIZE	7200 VOLTS		
	CURRENT PER PHASE	ELF FUSE	S/N
100	13.88	18A	1544
200	27.76	30A	1543

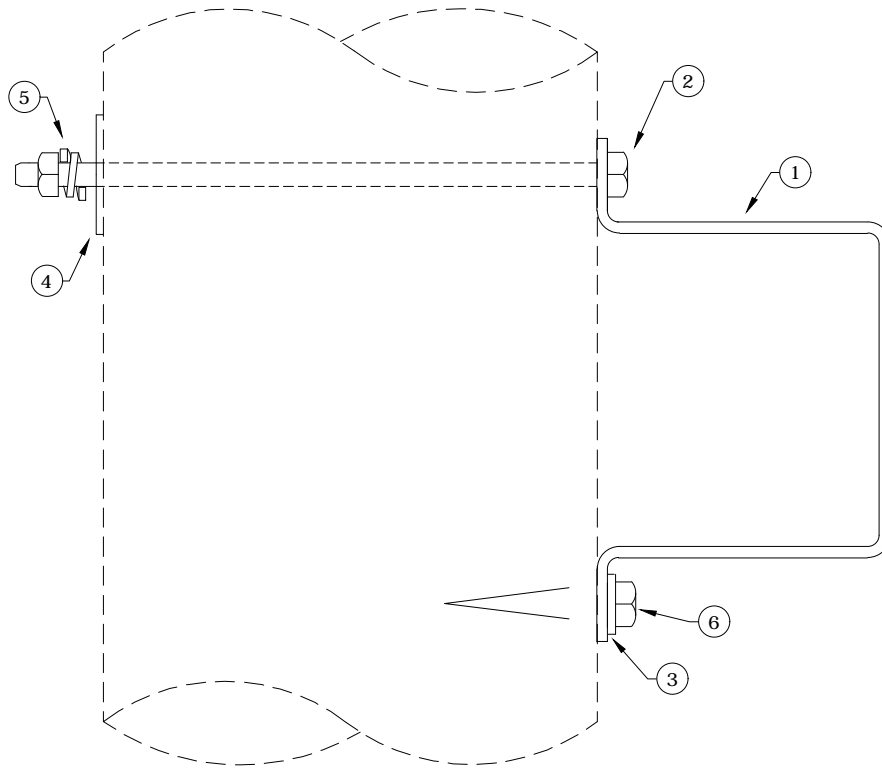
NOTE: "ELF" fuse is a combination expulsion and CLF that fits in a universal cutout. The fuse is made by Cooper.

### OLD BANKS (INSTALLED PRIOR TO 2012)

KVAR UNIT SIZE	7200 VOLTS		
	CURRENT PER PHASE	EXPULSION FUSE	CURRENT LIMITING FUSE
100	13.88	15A	25A
200	27.76	25A	40A

Rev 1: Changed to "ELF" fuse from expulsion & CLF.

	<h2 style="margin: 0;">CONSTRUCTION STANDARDS</h2> <h3 style="margin: 0;">CAPACITOR FUSE SCHEDULE</h3>		<b>REVISIONS</b>																	
			<table border="1" style="width: 100%; border-collapse: collapse;"> <thead> <tr> <th style="width: 5%;">#</th> <th style="width: 20%;">DATE</th> <th style="width: 20%;">ENGR</th> <th style="width: 20%;">OPS</th> </tr> </thead> <tbody> <tr> <td style="text-align: center;">1</td> <td style="text-align: center;">2/6/15</td> <td style="text-align: center;">CM</td> <td style="text-align: center;">DK</td> </tr> <tr> <td> </td> <td> </td> <td> </td> <td> </td> </tr> <tr> <td> </td> <td> </td> <td> </td> <td> </td> </tr> </tbody> </table>	#	DATE	ENGR	OPS	1	2/6/15	CM	DK									
#	DATE	ENGR	OPS																	
1	2/6/15	CM	DK																	
PAGE: 1 of 1	CF		CAD FILE: CF	APP: DATE:	SECTION <b>800</b>															

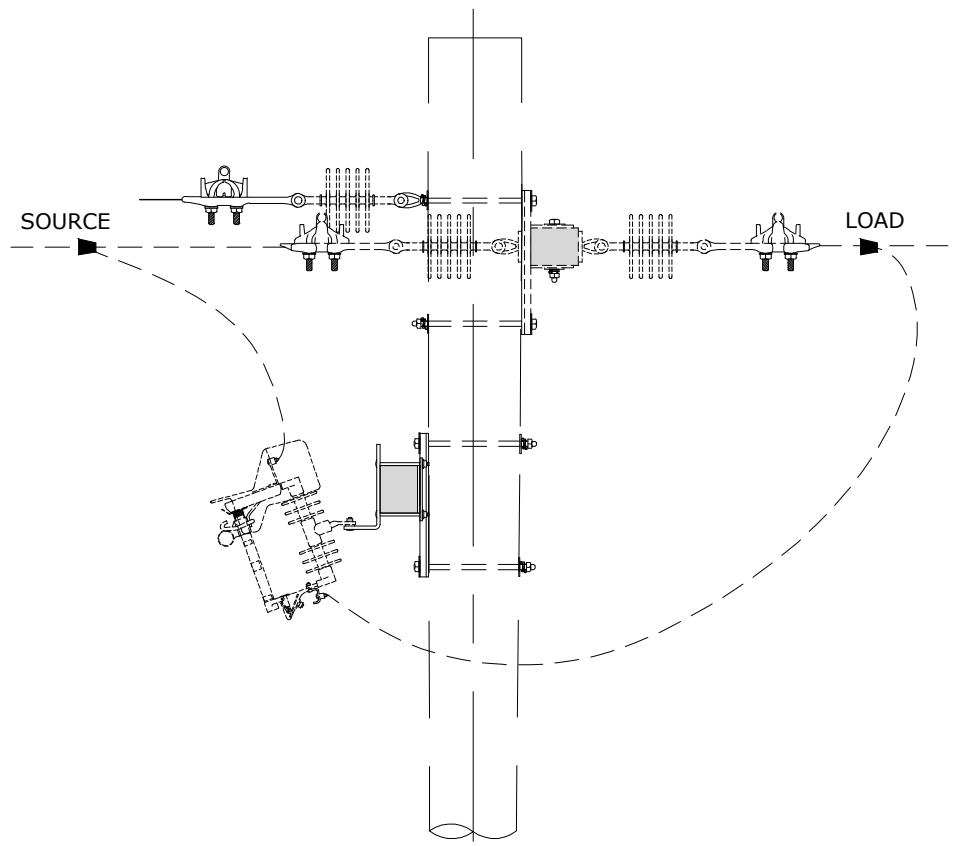
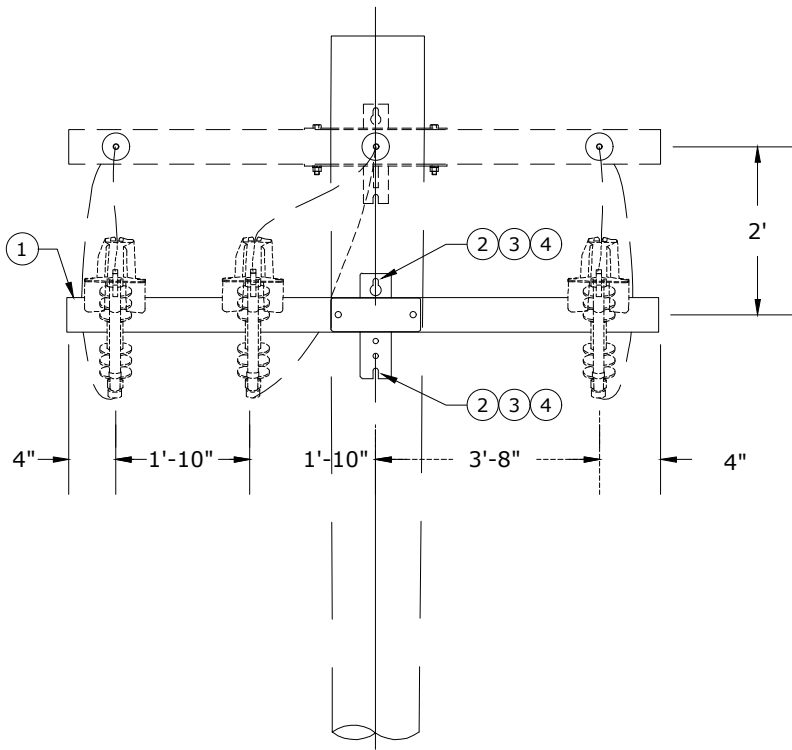


ITEM NO.	DESCRIPTION	CO1	
		QTY.	S/N
1	Bracket, Pole Mount, Cutout	1	219
2	Bolt, Machine 5/8" x 10" Galv.	1	154
3	Washer, Flat Round Galv. 1/2"	1	1394
4	Washer, Square Flat 5/8" x 2 1/4" x 2 1/4"	1	1412
5	Washer, Double Ring 5/8"	1	2217
6	Screw, Lag 1/2" x 3" Drive Point	1	1131



**CONSTRUCTION STANDARDS**  
**POLE MOUNTING BRACKET FOR**  
**CUTOUT & LIGHTNING ARRESTOR**

REVISIONS			
DATE	ENGR	OPS	
3/02			
REDRAWN IN CAD			
APP:	ELM	SECTION	
DATE:	1/31/80	800	



NOTE: Call for cutouts separately

Rev 2: Updated drawing to polymer cutouts, fiberglass crossarm, and material issue.

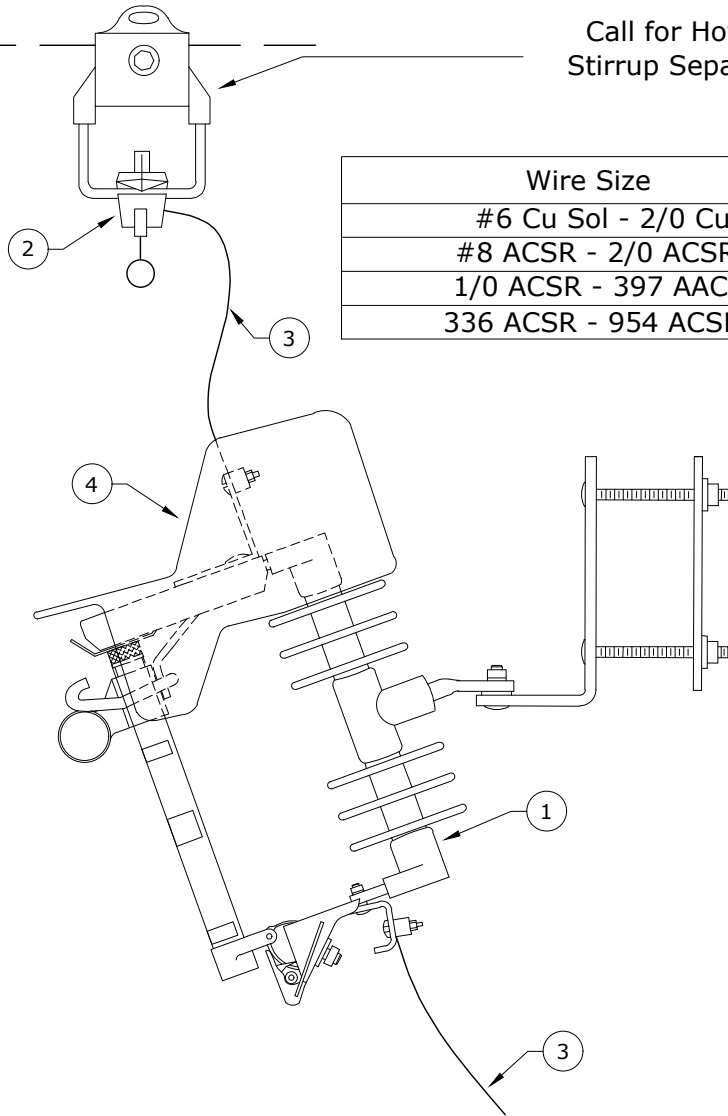
ITEM NO	DESCRIPTION	CO3	
		QTY	S/N
1	Crossarm, Distribution, Fiberglass, 8' Long x 3-5/8" Wide x 4-5/8" High	1	3030*
2	Bolt, Machine, 5/8" x 14", Galv., 12,400 lb Ultimate Tensile	2 *	156 *
3	Washer, Lock, Spring, Double Coil, Galv., 5/8"	2 *	2217
4	Washer, Curved, Square, Cast, 3" x 3" x 3/8" Thick x 13/16" Hole	2 *	1392



**CONSTRUCTION STANDARDS**  
LINE CUTOUTS

REVISIONS			
Δ	DATE	ENGR	OPS
1	8/25/09	CM	AH
2	12/19/22	CRM	GM

Call for Hot Line  
Stirrup Separately.



Wire Size	Bail Size	S/N
#6 Cu Sol - 2/0 Cu	#1 Cu	2338
#8 ACSR - 2/0 ACSR	#1 Cu	2339
1/0 ACSR - 397 AAC	1/0 Cu	2340
336 ACSR - 954 ACSR	2/0 Cu	2341

- Notes:**
1. This cutout is rated up to 100 A.
  2. For loads greater than 100 A use Std CO200 - Universal Cutout 200 A.
  3. By replacing the tube with a slug (solid blade S/N 2168) this cutout becomes an unfused 300 A disconnect.
  4. The Loadbuster tool will allow interruption of currents up to 900 A.
  5. A linkbreak door (S/N 2533) is available for locations that prevent use of the Loadbuster tool for loads up to 100 A.

Rev. 3 - Change from porcelain to polymer cutout, and changed red wire to black RHW-2.

ITEM NO.	DESCRIPTION	CO100	
		QTY.	S/N
1	Cutout, Polymer, Universal, 100A, 16kA Asymmetrical	1	2532 *
2	Clamp, Hot Line, GP1520, Line #8 Sol-2/0 Str, Tap #8 Sol-2/0 Str, Cu Only	1	283
3	Conductor, OH, 600V, Cu, #4, 7-Str, XLPE, 60 mil, Soft-drawn, 1C, RHW-2	15	391 *
4	Guard, Wildlife, Cutout, Polymer	1	2928 *



**CONSTRUCTION STANDARDS**  
UNIVERSAL CUTOUT  
100 AMP

REVISIONS			
DATE	ENGR	OPS	
2/23/00	Redrawn	in CAD	
8/25/09	CM	AH	
12/2/22	KJP		

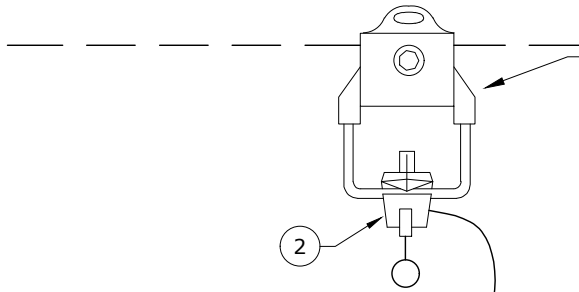
PAGE:  
1 of 1

**CO100**

CAD FILE:  
xCO100

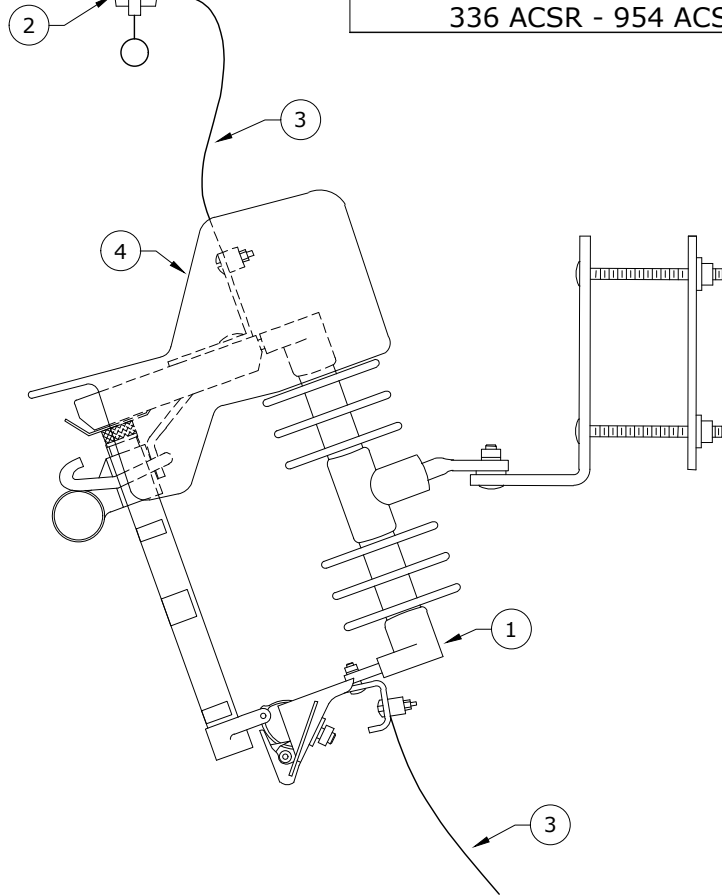
APP: HWH/GW  
DATE: 1/31/80

SECTION  
**800**



Call for Hot Line Stirrup Separately.

Wire Size	Bail Size	S/N
1/0 ACSR - 397 AAC	1/0 Cu	2340
336 ACSR - 954 ACSR	2/0 Cu	2341



- Notes:**
1. This cutout is for use in any application requiring 125 A or larger fuses.
  2. This cutout is limited to 12,000 A AIC. Contact Systems Engineering before installing within 1,000 feet of a substation.
  3. The loadbuster tool will allow interruptions of currents up to 900 A.

Rev. 3 - Change from porcelain to polymer cutout, and changed red wire to black RHW-2.

ITEM NO.	DESCRIPTION	CO200	
		QTY.	S/N
1	Cutout, Polymer, Universal, 200A, 12kA Asymmetrical	1	1906
2	Clamp, Hotline, GP1520, Line #8 Sol-2/0 Str, Tap #8 Sol-2/0 Str, Cu Only	1	283
3	Conductor OH, 600v, Cu 2/0, 19-str, XLPE, 80 mil, Soft-drawn, 1C, RHW-2	15	381*
4	Guard, Wildlife, Cutout, Polymer	1	2928*



**CONSTRUCTION STANDARDS**  
UNIVERSAL CUTOUT  
200 AMP

REVISIONS			
DATE	ENGR	OPS	
2/23/00	Redrawn	in CAD	
8/25/09	CM	AH	
12/2/22	KJP		

PAGE:  
1 of 1

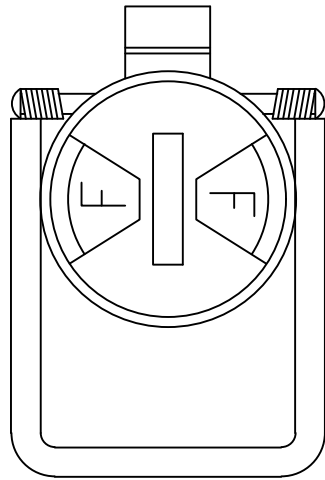
**CO200**

CAD FILE:  
XCO200

APP: GGW/RWG  
DATE: 4/92

SECTION  
**800**



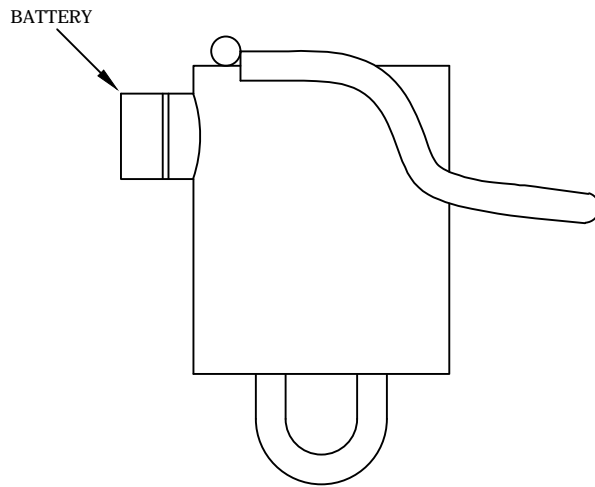


FRONT VIEW

USE: OFF-ROAD LINES, RECLOSERS, UG DIPS, AND WHEREVER NEEDED

TRIP CURRENT: 400A


RESET VOLTAGE AND TIME: 5KV (UP TO 5 MIN.)

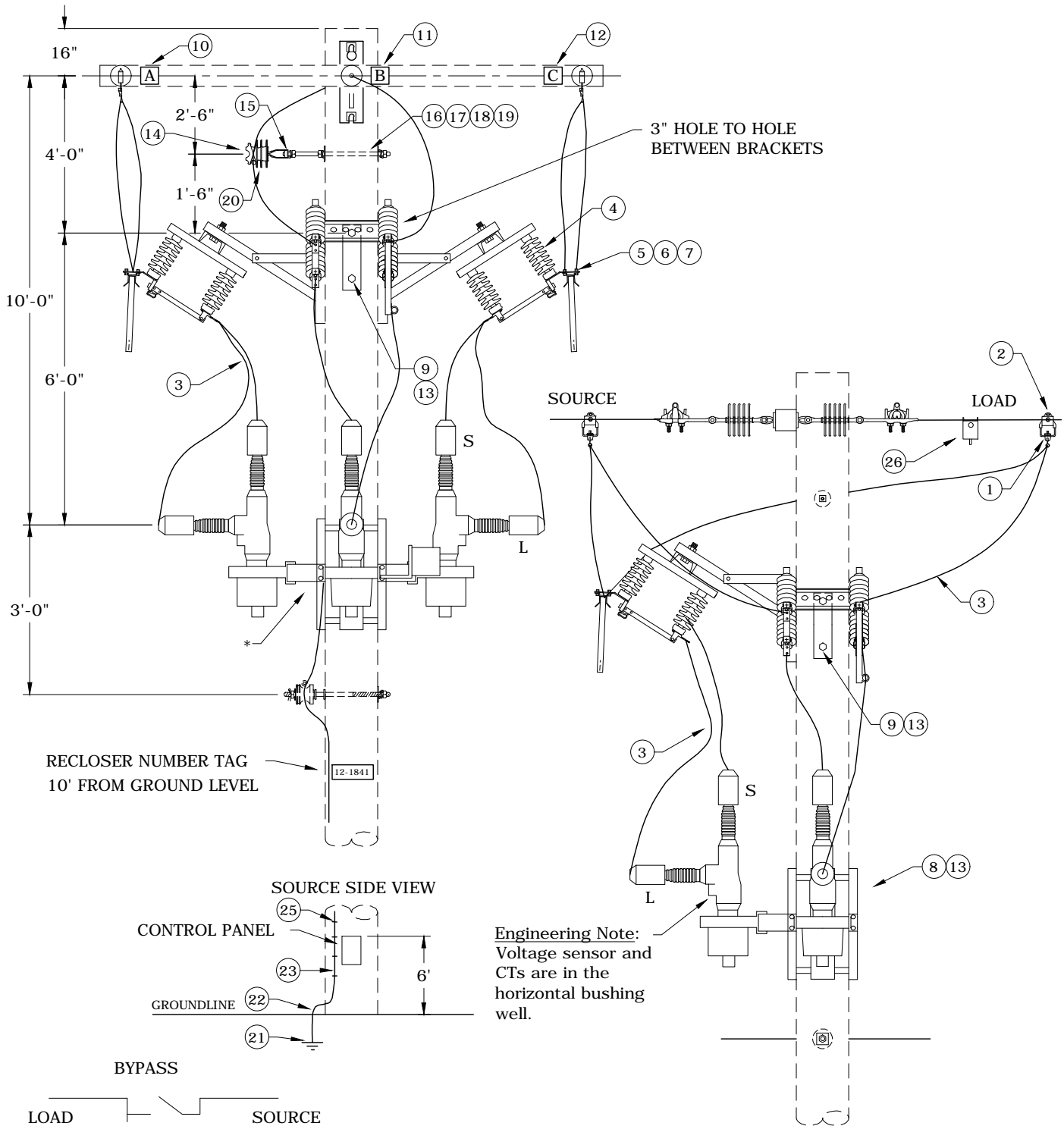


SIDE VIEW

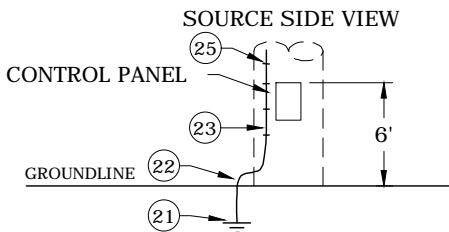
Rev 1: Corrected reset voltage and time.

ITEM NO.	DESCRIPTION	UFI1800	
		QTY.	S/N
1	OVERHEAD FAULT INDICATOR, CURRENT RESET, 400A TRIP	1	2558

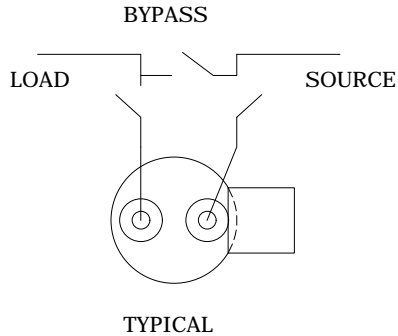
	<b>CONSTRUCTION STANDARDS</b> OVERHEAD FAULT INDICATORS		<b>REVISIONS</b>															
			<table border="1"> <thead> <tr> <th>DATE</th> <th>ENGR</th> <th>OPS</th> </tr> </thead> <tbody> <tr> <td>2/15/10</td> <td>KJP</td> <td></td> </tr> <tr> <td></td> <td></td> <td></td> </tr> <tr> <td></td> <td></td> <td></td> </tr> </tbody> </table>	DATE	ENGR	OPS	2/15/10	KJP										
	DATE	ENGR	OPS															
2/15/10	KJP																	
PAGE: 1 of 1	<b>OFI</b>	CAD FILE: OFI	APP: DATE:	SECTION <b>800</b>														



RECLOSER NUMBER TAG  
10' FROM GROUND LEVEL



Engineering Note:  
Voltage sensor and  
CTs are in the  
horizontal bushing  
well.



\* Need pole diameter measurement for  
Transformer shop to build cluster-mount  
and consult Service Department for location.

- Notes:
1. Type G & W reclosers are not source sensitive. Source or load may be on either bushing. Drawing just shows preferred connections.
  2. Call for reclosers separately.
  3. Use 50' Class 4 pole minimum.

Rev 2: Added note on source and load designation, and changed to Copperweld ground.



## CONSTRUCTION STANDARDS

### THREE 1Ø SOLID DIELECTRIC RECLOSERS

PAGE:  
1 of 2

R5

CAD FILE:  
R5

REVISIONS			
REV	DATE	ENGR	OPS
1	7/29/10	KJP	
2	2/25/15	KJP	
APP: CM/AH		SECTION	
DATE: 1/13/10		800	

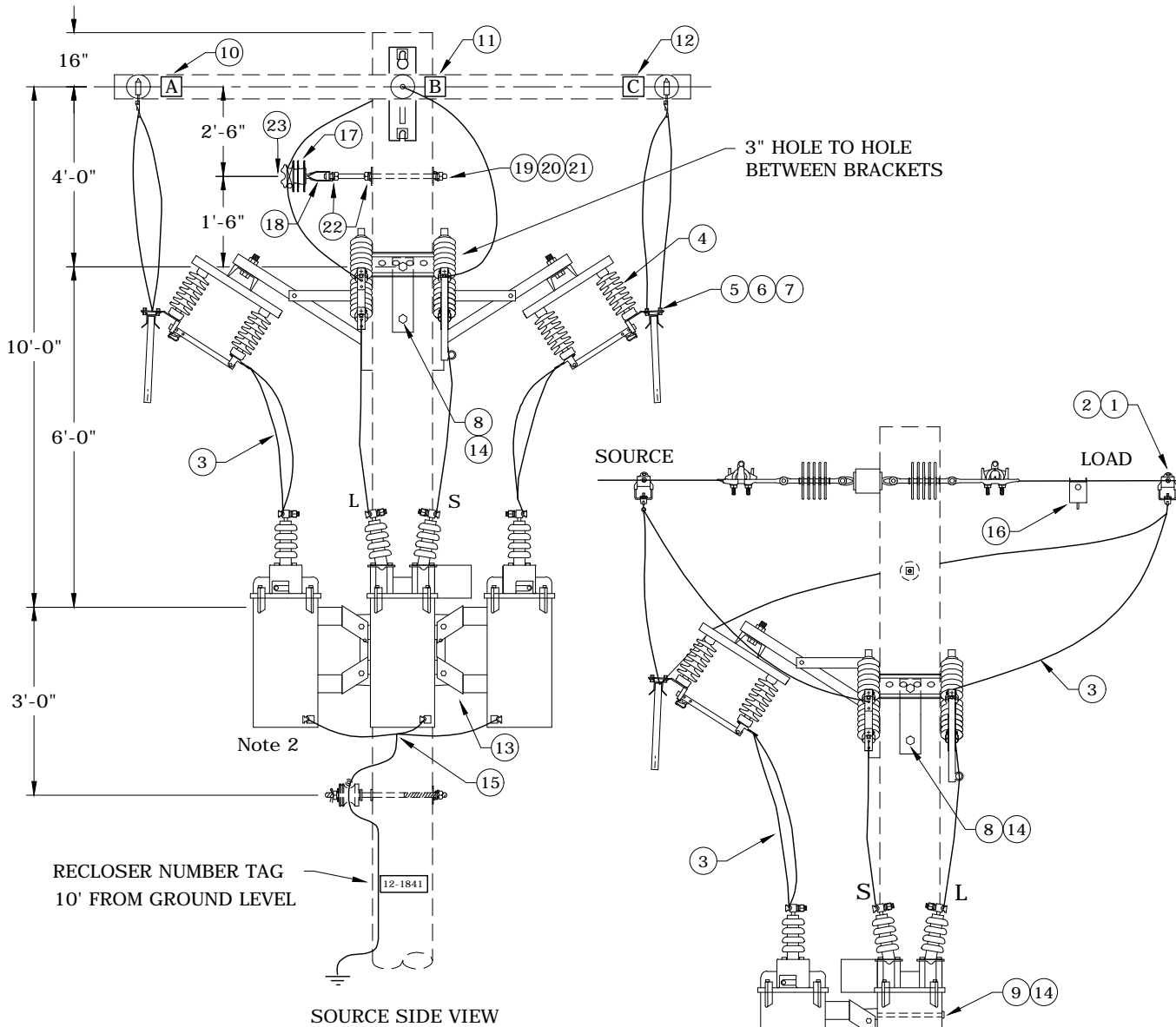
Rev 2: Added note on source and load designation, and changed to Copperweld ground.

		R5	
ITEM NO.	DESCRIPTION	ADDITIONAL MATERIAL	
		QTY.	S/N
1	Clamp, Hotline GP 1540	6	285
2	Clamp, Hotline Stirrup, 266.5 - 397.5 Al/Cu	6	2340
3	Conductor, 4/0 Cu, 1/C, 600V XLP, 19 Str.	80	382
4	Switch, Transfer 600A	3	1276
5	Connector, Comp Lugs, Cu 4/0 to Cu 4/0	12	434
6	Bolt, Machine 1/2" x 2", Stainless Steel	24	132
7	Bolt, Assembly, 1 1/2" x 2", SS W/ Belleville & Flat Washers	48	1389
8	Bolt, Machine 5/8" x 12", Galv., 12,400 lbs. Ultimate Tensile	4	155
9	Bolt, Machine 5/8" x 14", Galv., 12,400 lbs. Ultimate Tensile	2	156
10	Tag, Phasing - A	1	1280
11	Tag, Phasing - B	1	1281
12	Tag, Phasing - C	1	1282
13	Washer, Curved, Square, Cast 3" x 3" x 3/8" Thick x 13/16" Hole	4	1392
ITEM NO.	DESCRIPTION	PR20TREE	
		QTY.	S/N
14	Insulator, Pin, C Neck, Polyethylene	1	1968
15	Pin, Adapter	1	959
16	Washer, Curved, Square, Cast 3" x 3" x 3/8" Thick x 13/16" Hole	2	1392
17	Bolt, Double, Arm, 5/8" x 16" Galv.	1	81
18	Washer, Lock, Spring, Double Coil, Galv., 5/8"	1	2217
19	Washer, Lock, Spring, Single Coil, Galv., 5/8"	2	1403
20	Wire, Tie, Al Annealed #4 SD	10	3012
ITEM NO.	DESCRIPTION	N1	
		QTY.	S/N
21	Rod, Ground, 5/8" x 8'	1	1124
22	Clamp, Ground rod, 5/8", Small, Bronze	1	281
23	Conductor, Cu-Clad Steel, #4 Cu Equivalent, Black Jacket	36	1512
24	Connector, Compression, Cu/Al, Neutral	1	413
25	Staple, Ground, Barbed, Galv. 1 1/2"	10	2707
ITEM NO.	DESCRIPTION	ADDITIONAL MATERIAL	
		QTY.	S/N
26	Fault Indicator, OH Beacon, 400A	3	2558
27	Conduit, Flex, Liquid Tight, 3/4"	10	1615
28	Conduit, PVC, 3/4" x 10', Sch. 80	3	2221
29	Conductor, Cu, #12, 600V, 19 Strand (Streetlight)	35	386
30	Standoff Bracket 10 1/2"	3	226



**CONSTRUCTION STANDARDS**  
THREE 1Ø  
SOLID DIELECTRIC RECLOSERS

REVISIONS			
△	DATE	ENGR	OPS
1	7/29/10	KJP	
2	2/25/15	KJP	
△			

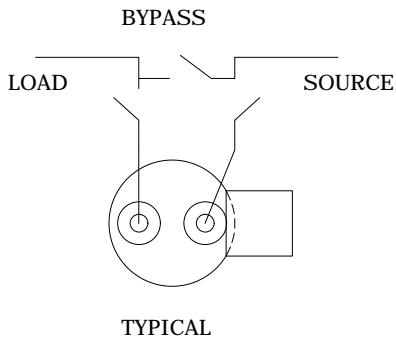


Note 2

RECLOSER NUMBER TAG  
10' FROM GROUND LEVEL

SOURCE SIDE VIEW

NOTE: Consult Service Department for location of reclosers.



- NOTES:
1. Type L reclosers are not source sensitive. Source or load may be on either bushing.
  2. Type D and VXE reclosers are source sensitive. The source must be connected to the bushing closest to the indicator rain shield. The tank ground is on top of D & VXE reclosers.
  3. Call for reclosers separately.
  4. Use 50' Class 2 pole minimum.

REV. 3: Added deadend assembly to drawing, changed Note #4 to 50', and added "Oil-Filled" to title



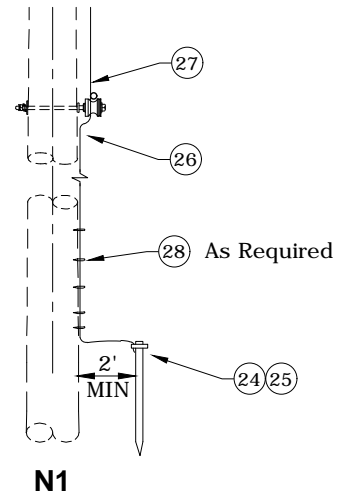
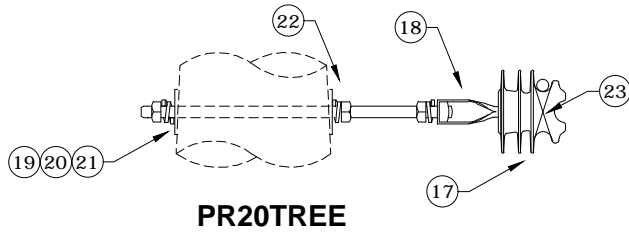
**CONSTRUCTION STANDARDS**  
THREE 1Ø  
OIL-FILLED RECLOSERS

PAGE:  
1 of 2

**R6**

CAD FILE:  
R6

REVISIONS											
REV	DATE	ENGR	OPS								
1	2/23/00	HWH	MA								
2	6/17/03	LB	DK								
3	8/25/09	CM	AH								
<table border="1"> <tr> <td>APP:</td> <td>ELM</td> <td colspan="2">SECTION</td> </tr> <tr> <td>DATE:</td> <td>1/31/80</td> <td colspan="2">800</td> </tr> </table>				APP:	ELM	SECTION		DATE:	1/31/80	800	
APP:	ELM	SECTION									
DATE:	1/31/80	800									



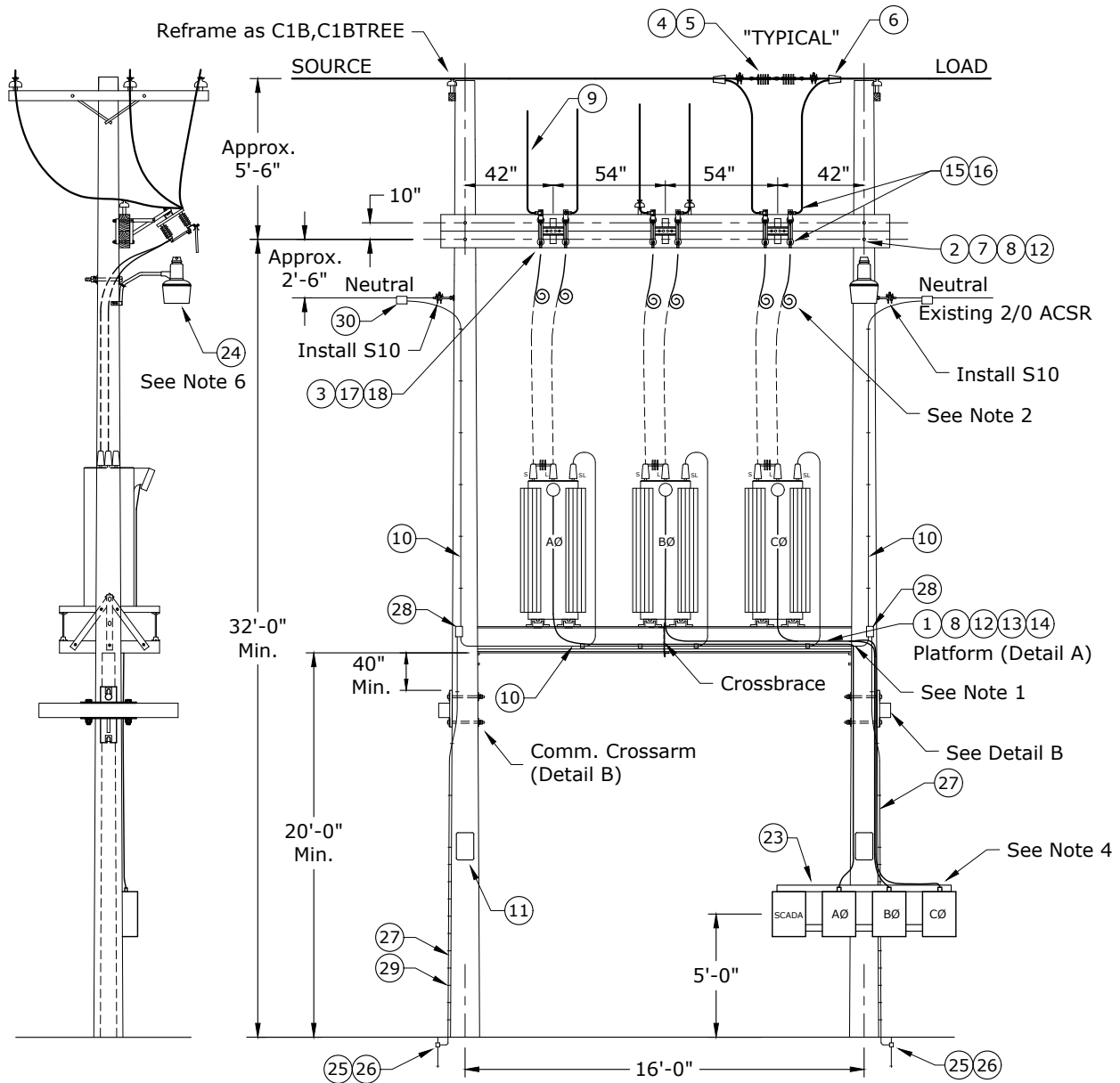
REV. 3: Added deadend assembly to drawing, changed Note #4 to 50', and added "Oil-Filled" to title

ITEM NO.	DESCRIPTION	R6	
		QTY.	S/N
1	Clamp, Hotline AGP 1540	6	285
2	Clamp, Hotline Stirrup	6	2340
3	Cond. CU 4/0 1C 600V	80	382
4	Switch, Transfer 600A	3	1276
5	Connector, Comp Lug, Cu 4/0	12	434
6	Bolt, Machine 1/2" X 2", SS	24	132
7	Washer Belleville Assembly 1/2"	48	1389
8	Bolt, Machine 5/8" x 12", Galv.	4	155
9	Bolt, Machine 5/8" x 14", Galv.	2	156
10	Tag, Phasing - A	1	1280
11	Tag, Phasing - B	1	1281
12	Tag, Phasing - C	1	1282
13	Mount, Triple Cluster Trans. Al	1	904
14	Washer, Square Curved, 3" x 3" x 3/8" Thick x 13/16" Hole	4	1392
15	Connector, Cu, Compression, #4-#4 (4C4)	3	450
16	Fault Indicator, OH Beacon	3	2558
ITEM NO.	DESCRIPTION	PR20TREE	
		QTY.	S/N
17	Insulator, Pin C Neck	1	1968
18	Pin, Adapter	1	959
19	Washer, Square, Cast, 3" x 3" x 3/8" Thick x 13/16" Hole	2	1392
20	Bolt, Double, Arm, 5/8" x 16"	1	81
21	Washer, Spring, 5/8"	1	2217
22	Washer Lock, 5/8"	2	1403
23	Wire, Tie, Al Annealed #4 SD	10	3012
ITEM NO.	DESCRIPTION	N1	
		QTY.	S/N
24	Rod, Ground, 5/8" x 8'	1	1124
25	Clamp, Ground rod, 5/8", Small, Bronze	1	281
26	Conductor, Cu 4SLD 1C	36	390
27	Connector, Compression, Cu/Al, Neutral	1	413
28	Staple, Ground Wire	10	1228



**CONSTRUCTION STANDARDS**  
THREE 1Ø  
OIL-FILLED RECLOSERS

REVISIONS			
Δ	DATE	ENGR	OPS
1	2/23/00	HWH	MA
2	6/17/03	LB	DK
3	8/25/09	CM	AH
Δ			
APP:	ELM	SECTION	
DATE:	1/31/80	800	



- Notes:**
1. Ground bus across bottom of regulator platform:
    - use 2/0 Str Cu
    - tie ground bus to system neutral
    - tie regulator cases to ground bus
    - tie ground bus to pole ground
  2. Terminate (6) 4/0 Cu leads on switches & coil up 10' and leave for CPU substation crew.
  3. Regulators, poles, and any reframing of primary or neutral must be called for separately.
  4. Tie Jimmy bracket ground to pole ground.
  5. Based on distance to road and size of pull-off, engineer may require control panel, switches, etc. to face the field instead of the road.
  6. Engineer to call for #6 Duplex (S/N 357) for high light from nearest transformer.
  7. Minimum pole size is 45' Class 2.

Rev. 4 - Changed Stirrup connector to wedge tap.



## CONSTRUCTION STANDARDS

### 3Ø REGULATOR INSTALLATION

REVISIONS			
REV	DATE	ENGR	OPS
1	6/17/03	LB	DK
2	2/19/08	LB	AH
3	12/18/19	CM	GM
4	12/14/20	JDK	

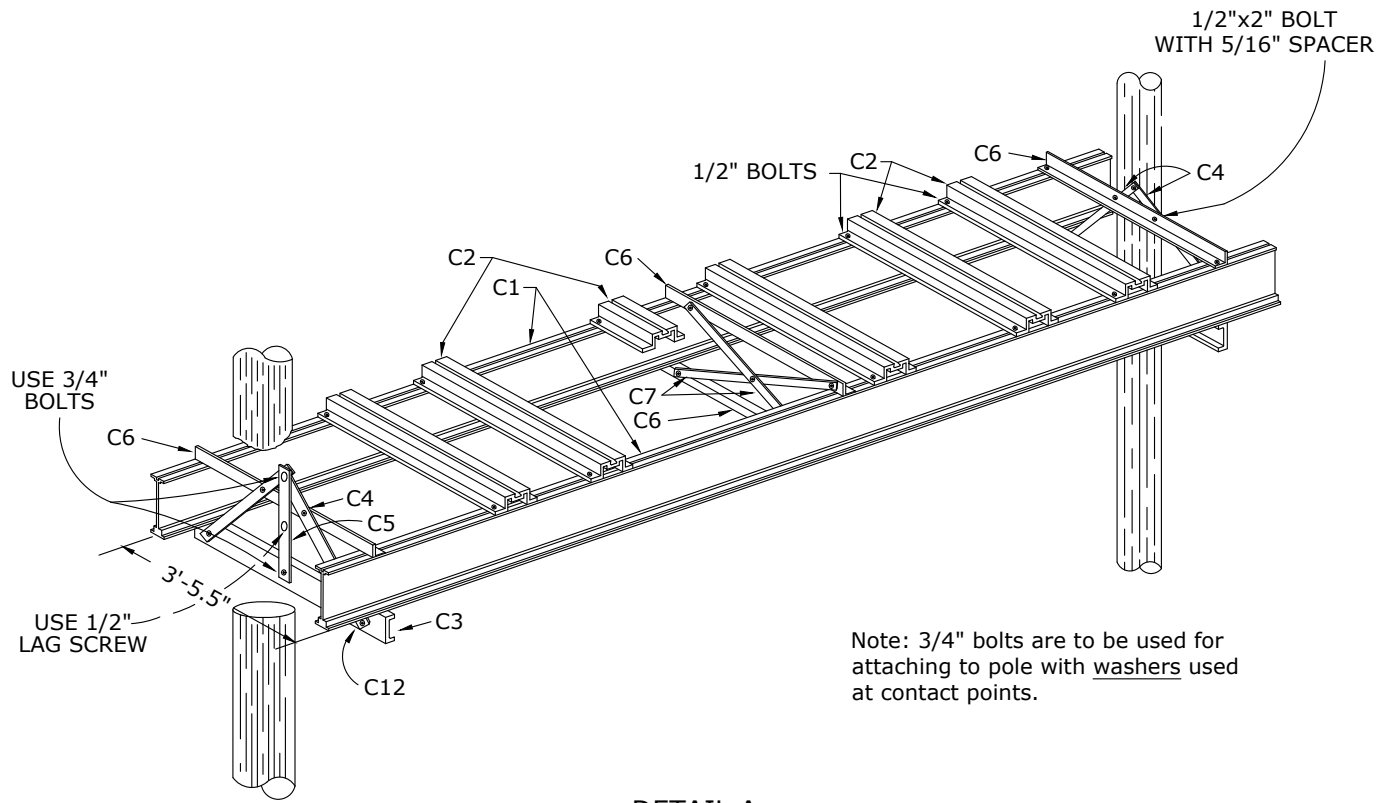
PAGE:  
1 of 4

# REG3

CAD FILE:  
REG3

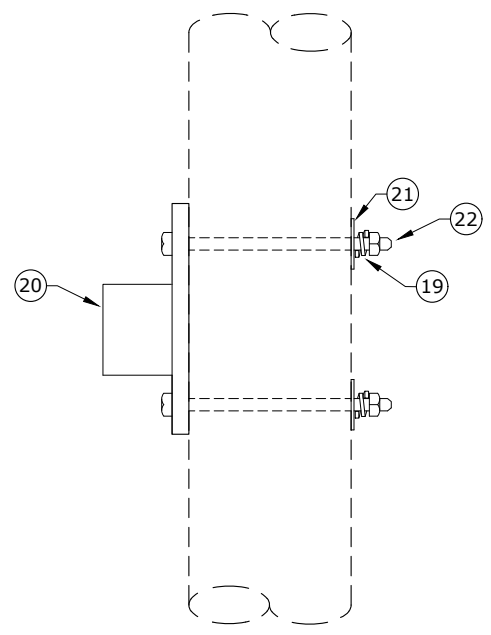
APP: LB/AH  
DATE: 11/1/00

SECTION  
**800**



**DETAIL A**

Platform Does NOT Come with Lag Screws & Through Bolts



**DETAIL B**

Communications Fiberglass Crossarm

Rev. 4 - Changed Stirrup connector to wedge tap.



**CONSTRUCTION STANDARDS**  
3Ø REGULATOR INSTALLATION

REVISIONS			
Δ	DATE	ENGR	OPS
1	6/17/03	LB	DK
2	2/19/08	LB	AH
3	12/18/19	CM	GM
4	12/14/20	JDK	

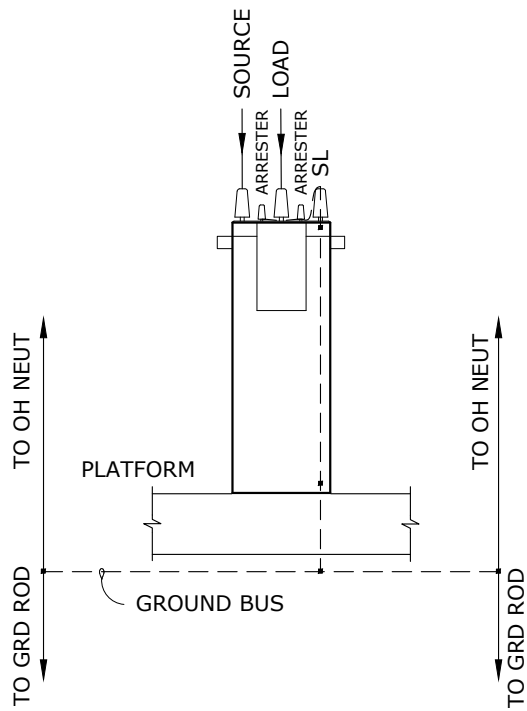
PAGE:  
2 of 4

**REG3**

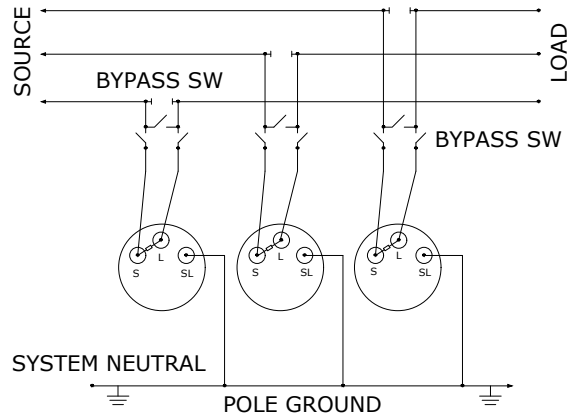
CAD FILE:  
REG3

APP: LB/AH  
DATE: 11/1/00

SECTION  
**800**

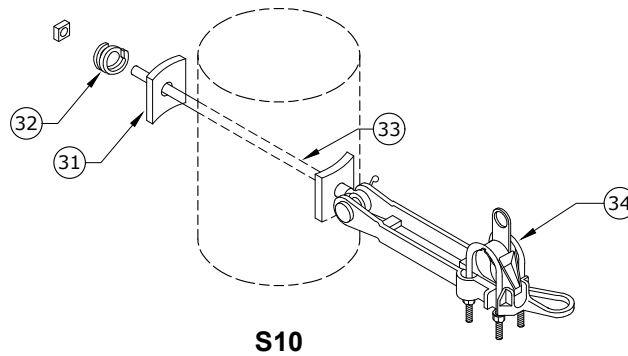


Typical Grounding of Regulator



Electrical Wiring Diagram

Source and load are shown for normal feed. Regulators are reverse feed units and will operate correctly with source and load reversed.



Rev. 4 - Changed Stirrup connector to wedge tap.



**CONSTRUCTION STANDARDS**  
3Ø REGULATOR INSTALLATION

PAGE:  
3 of 4

**REG3**

CAD FILE:  
REG3

REVISIONS			
Δ	DATE	ENGR	OPS
1	6/17/03	LB	DK
2	2/19/08	LB	AH
3	12/18/19	CM	GM
4	12/14/20	JDK	


  

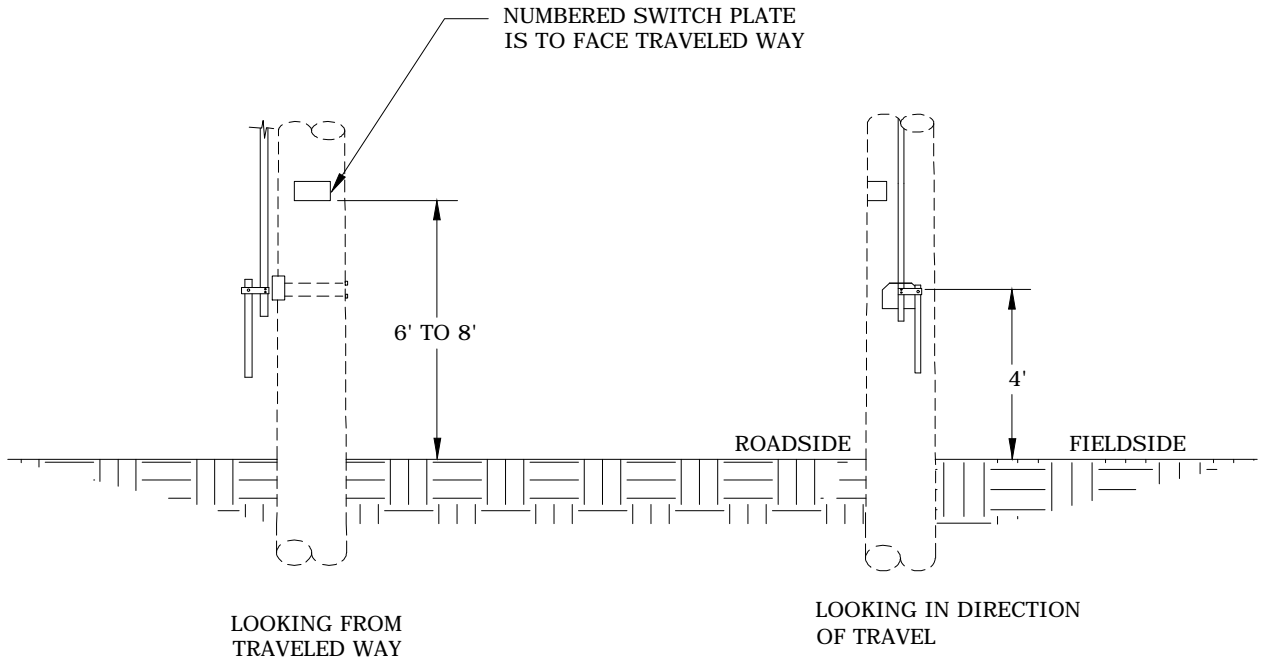
APP:	LB/AH	SECTION
DATE:	11/1/00	<b>800</b>



Rev. 4 - Changed Stirrup connector to wedge tap.

ITEM NO.	DESCRIPTION	REG3	
		QTY.	S/N
1	Platform, Regulator, AL, w/o Walkway	1	2505
	Each Platform Consists Of: (Items #C1 Thru #C13)		
C1	11 1/2" Aluminum Beam, 16'-8" length	2	
C2	Aluminum Channel, 41 1/8" long	6	
C3	5" Aluminum Channel, 3'-5 5/8" long	2	
C4	5/16" x 2 3/4" Aluminum Brace	4	
C5	5/16" x 2 3/4" Aluminum Template Brace, 1'-10 7/16" long	2	
C6	Aluminum Angles (Stabilizer)	4	
C7	3/16" x 1 1/2" Aluminum Spacers		
C8	5/16" Aluminum Spacers		
C9	1/2" x 1 1/4" Galvanized Machine Bolts with Hex Nuts		
C10	1/2" x 2" Galvanized Machine Bolts with Hex Nuts		
C11	1/2" Galvanized Palnuts	45	
C12	5/8" x 1 1/2" Galvanized Machine Bolts with Hex Nuts	8	
C13	5/8" Galvanized Palnuts	8	
2	Arm, Cross (Distribution), 18' L x 3 3/4" T x 7 3/4" H	2	850
3	Switch, Bypass, Recloser/Regulator, 600A, 15kV, 1Ø	3	1276
4	Insulator, Suspension, 15kV Clevis-Tongue, Polymer	6	1967
5	Clamp, Strain #2 - 397, Distribution Deadend	6	302
6	Connector, Tap, Wedge, 397 AAC (Run) to 4/0 Str Cu (Tap)	6	2437*
7	Washer, Square, Flat, 4" x 4" x 3/4" Hole	4	1413
8	Washer, Lock, Spring, Double Coil Galv., 3/4"	8	2218
9	Conductor, 600V, XLPE, Cu, 4/0, 19 Str, 1C, USE	150	382
10	Conductor, 600V, XLPE, Cu, 2/0, 19 Str, 1C, USE	40	381
11	Sign, "Warning, Hazardous Voltage"	2	995
12	Bolt, Machine, 3/4" x 16", Galv., 18,300 lb Ultimate Tensile	8	175
13	Screw, Lag, 1/2" x 4 1/2", Twist-Drive, Drive Point	2	1132
14	Washer, Curved, Cast, 4" x 4" w/ 13/16" Hole	4	1910
15	Connector, Compression Lug, 2-Hole, 4/0 CU Only	12	434
16	Bolt, Assembly, 1/2" x 2", SS w/ Belleville & Flat Washers	24	1389
17	Bolt, Machine 1/2" x 8", Galv., 7800 lbs Ultimate Tensile	6	144
18	Washer, Square, Flat, 5/8" x 2 1/4" x 2 1/4"	6	1412
19	Washer, Lock, Spring, Double Coil, Galv., 5/8"	4	2217
20	Arm, Cross (Comm), Fiberglass, 5' L x 3-5/8" T x 4-5/8" H	2	2894
21	Washer, Curved, Square, Cast, 3" x 3" x 3/8" Thick x 13/16" Hole	4	1392
22	Bolt, Machine 5/8" x 16", Galv., 12,400 lb Ultimate Tensile	4	157
23	Jimmy Bracket for Mounting Control Boxes	1	N.S.
24	Luminaire, High Light, LED, 3000K, w/ 2' Arm, Photoeye & 5' of Prewire	1	2890
25	Rod, Ground, 5/8" x 8'	2	1124
26	Clamp, Ground Rod, 5/8", Small, Bronze	2	281
27	Conductor, Copper-Clad Steel, #4 Cu Equivalent, Covered	50	1512
28	Connector, Crimpet, Cu Run 1/0 - 2/0 Str, Tap #8 Sol -#2 Str	2	456
29	Staple, Ground, Barbed, Galvanized, 1 1/2"	60	2707
30	Connector, H-Tap, Al/Cu, Run 1/0-3/0 Str, Tap 1/0-3/0 Str	2	415
		<b>S10 (2)</b>	
ITEM NO.	DESCRIPTION	QTY.	S/N
31	Washer, Curved, Square, Cast, 3" x 3" x 3/8" Thick x 13/16" Hole	4	1392
32	Washer, Lock, Spring, Double Coil, Galv., 5/8"	2	2217
33	Bolt, Eye, 5/8" x 14", Galv., 12,400 lbs Ultimate Tensile	2	108
34	Clamp, Strain Distribution, #2 - 397.5 MCM	2	302

	CONSTRUCTION STANDARDS		REVISIONS			
	3Ø REGULATOR INSTALLATION		▲	DATE	ENGR	OPS
			1	6/17/03	LB	DK
			2	2/19/08	LB	AH
		3	12/18/19	CM	GM	
		4	12/14/20	JDK		
PAGE: 4 of 4	REG3	CAD FILE: REG3	APP: LB/AH	SECTION <b>800</b>		
			DATE: 11/1/00			



(LOCATION OF SWITCH HANDLE MAY VARY)



# CONSTRUCTION STANDARDS

## POLE TOP SWITCH SWITCH NUMBER LOCATION

### REVISIONS

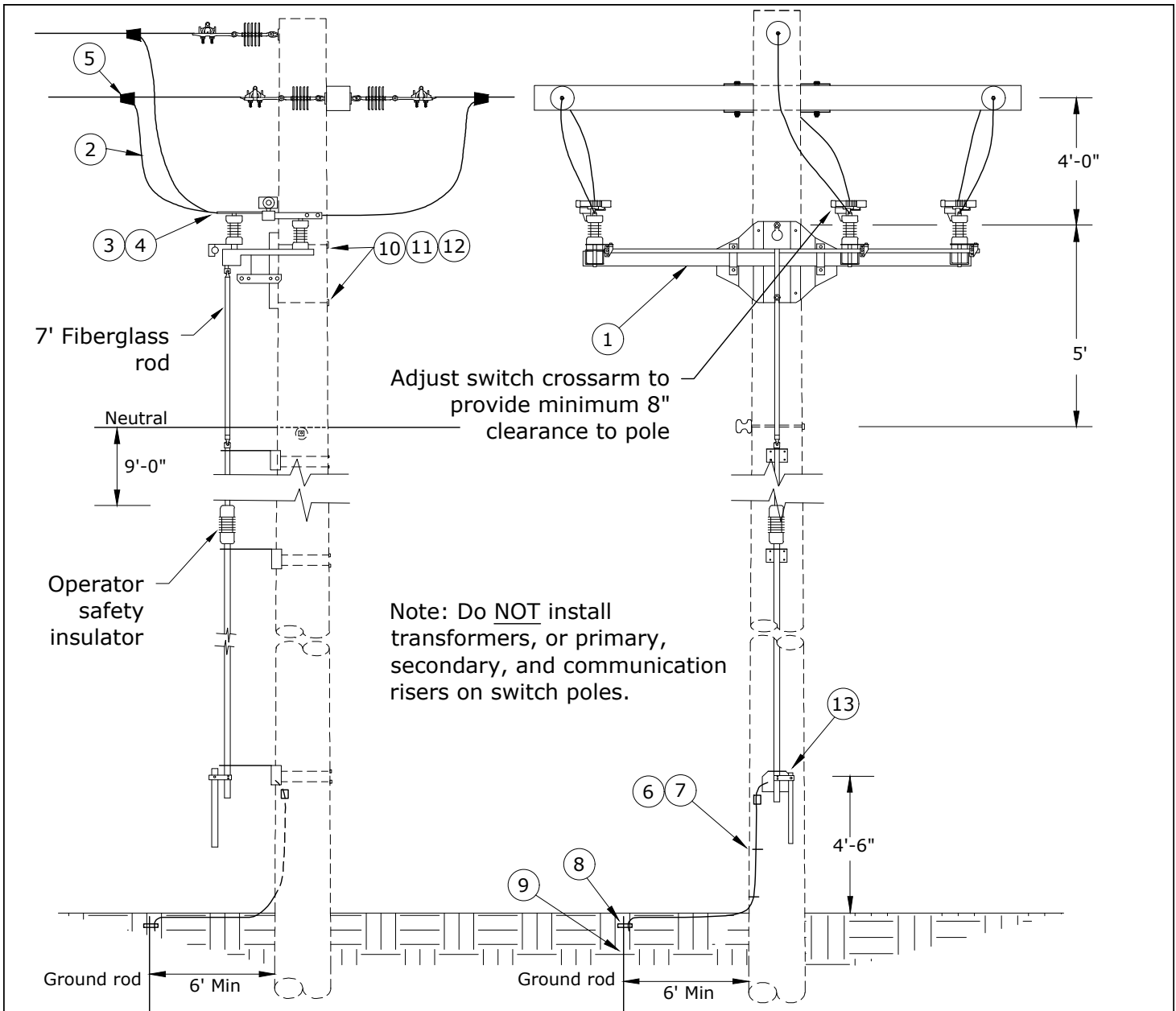
NO.	DATE	ENGR	OPS
1	2/23/00	HWH	MA

PAGE:  
1 of 1

**SW3**

CAD FILE:  
SW3

APP:	SECTION
JEH	800
DATE: 2/22/00	



Rev. 3 - Added secondary and communication risers to note of restricted installations on switch poles, and corrected material issue.

ITEM NO.	DESCRIPTION	SW6	
		QTY.	S/N
1	Switch, Loadbreak, Horizontal, 900A, 15kV	1	2432
2	Conductor, OH, AAC, 397.5 MCM, 19-Str, Bare, 1C	60	367
3	Connector, Compression Lug, 2-Hole, 336 ACSR & 397 AAC	6	438
4	Bolt, Assembly, 1/2" x 2", SS w/ Belleville & Flat Washers	12	1389
5	Connector, Tap, Wedge, Run & Tap 336 ACSR - 397AAC	6	2501
6	Conductor, Copper-Clad Steel, Black w/ Green Strip, #4 Cu Equivalent, 40% Annealed	20	1512*
7	Staple, Ground, Barbed, Galvanized, 1 1/2"	5	2707*
8	Clamp, Ground Rod, 5/8", Small, Bronze	1	281
9	Rod, Ground, 5/8" x 8'	1	1124
10	Bolt, Machine, 3/4" x 16", Galv, 18,350 lb Ultimate Tensile	2	175
11	Washer, Curved, Cast 4" x 4" x 13/16" Hole	2	1910
12	Washer, Lock, Spring, Double Coil, 3/4"	2	2218
13	Lock, Padlock, 2" Hardened Stainless Steel Shackle for OH Switches	1	2564



## CONSTRUCTION STANDARDS

3Ø SWITCH  
UNDERSLUNG  
900A

PAGE:  
1 of 1

# SW6

CAD FILE:  
SW6

REVISIONS			
REV	DATE	ENGR	OPS
1	11/10/05	LB	AH
2	12/14/09	KJP	
3	3/7/23	CM	GM

APP: HWH/MA	SECTION
DATE: 2/23/00	800