

1500

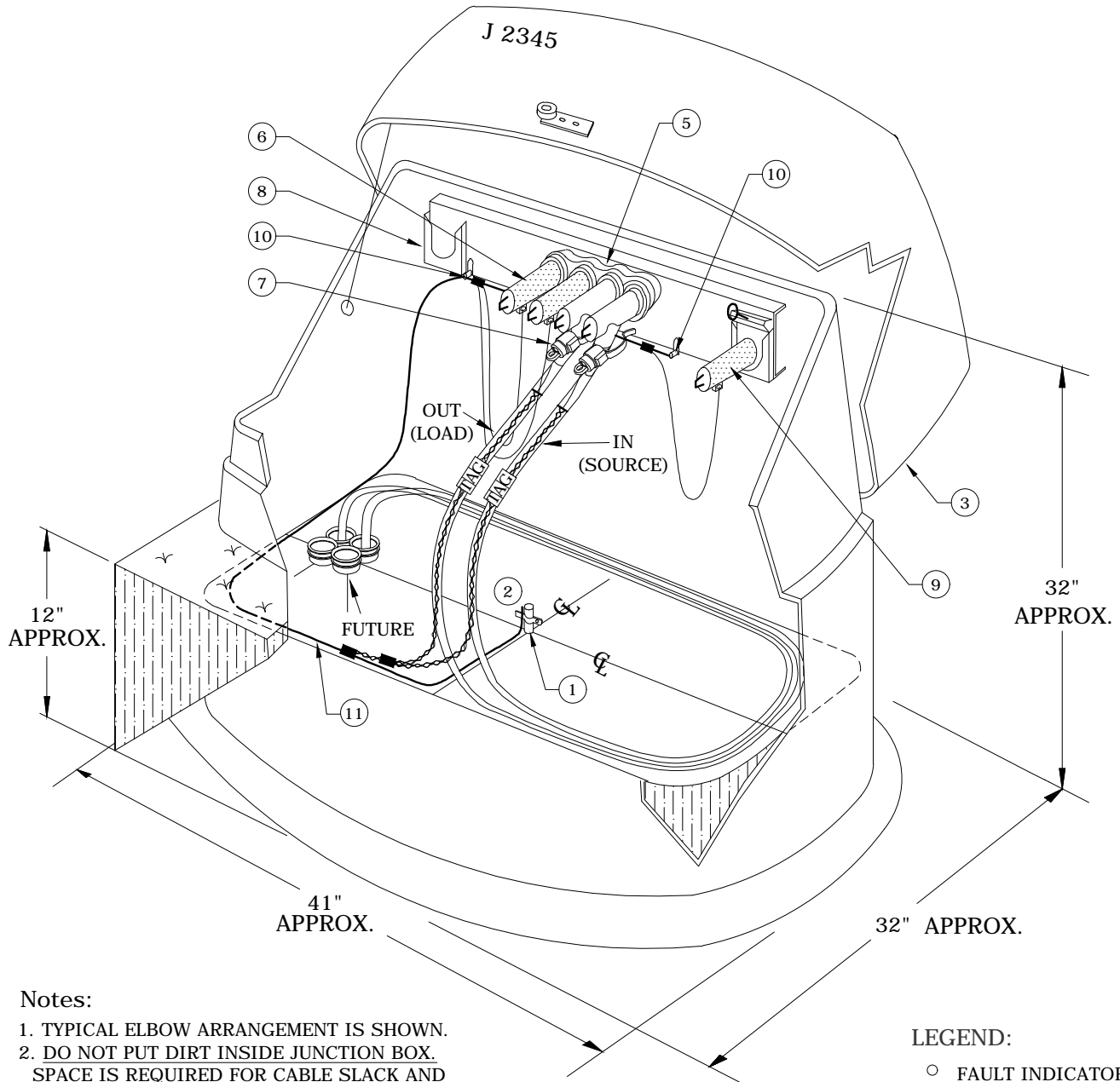
UNDERGROUND J-BOXES & VAULTS

10/29/2018

~	UJ1	Primary Junction Box Single Phase
~	UJ3	Primary Junction Box Three Phase
~	UJ5	Primary 3Ø Padmount Junction Box Pad
~	UJM	Primary Junction Box Single & Three Phase Material List
~	ULE	Loop Enclosure
~	UVG1,UVG2	Underground Vault Grounding System

N	New Standard
R	Redrawn Standard
C	Changed Standard
~	No Change

J 2345



Notes:

1. TYPICAL ELBOW ARRANGEMENT IS SHOWN.
2. DO NOT PUT DIRT INSIDE JUNCTION BOX. SPACE IS REQUIRED FOR CABLE SLACK AND OPERATING CLEARANCE.
3. LEAVE CABLE SLACK FOR FUTURE OPERATIONS.

LEGEND:

- FAULT INDICATOR
- NORMALLY OPEN (ON STANDOFF BRACKET)

Rev 4: Changed to Voltage-reset fault indicators and added equipment lock.

UJM4	UJM41	UJM42	UJM43	UJM44	UJM45	UJM46	UJM47	UJM48	UJM49

ITEM	MATERIAL LIST DESCRIPTION	QTY	S/N
1	Ground Rod 5/8" x 8'	1	1124
2	Clamp, Ground Rod 5/8", Small	1	281
3	Junction Box, 1Ø	1	194
4	Equipment Lock, UG	1	837 *



CONSTRUCTION STANDARDS
PRIMARY JUNCTION BOX
SINGLE PHASE

REVISIONS			
REV	DATE	ENGR	OPS
1	2/23/00	HWH	MA
2	9/23/04	LB	AH
3	12/29/04	LB	AH
4	4/29/09	CM	AH

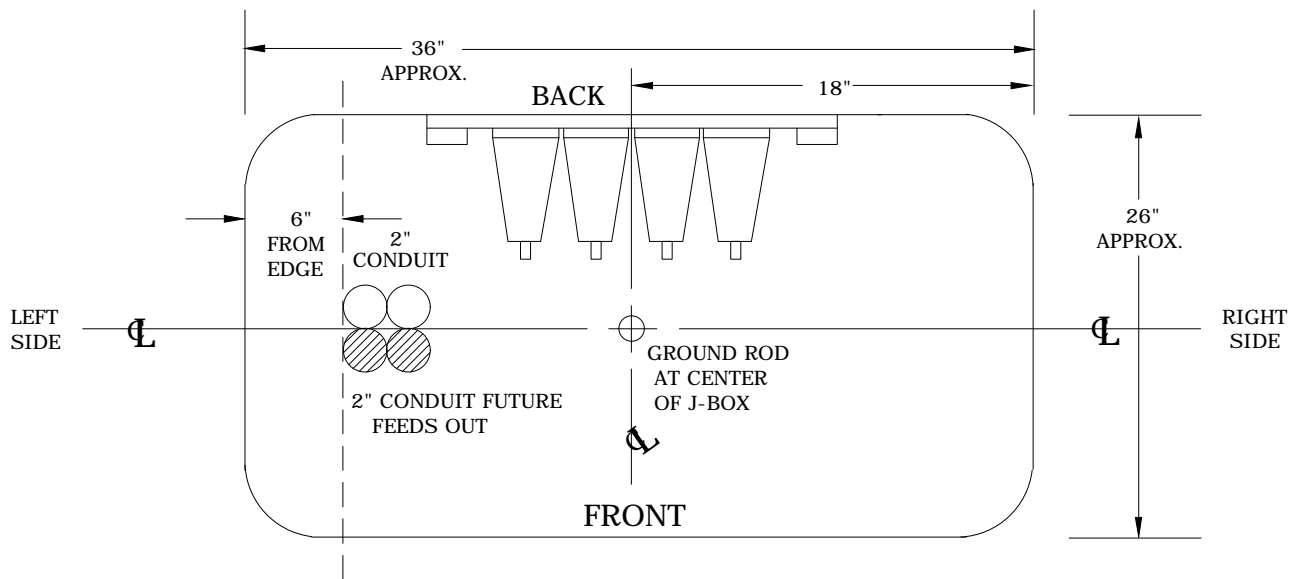
PAGE:
1 of 2

UJ1

CAD FILE:
UJ1

APP: JEH
DATE: 2/22/00

SECTION
1500



PLAN VIEW 1-PHASE J-BOX

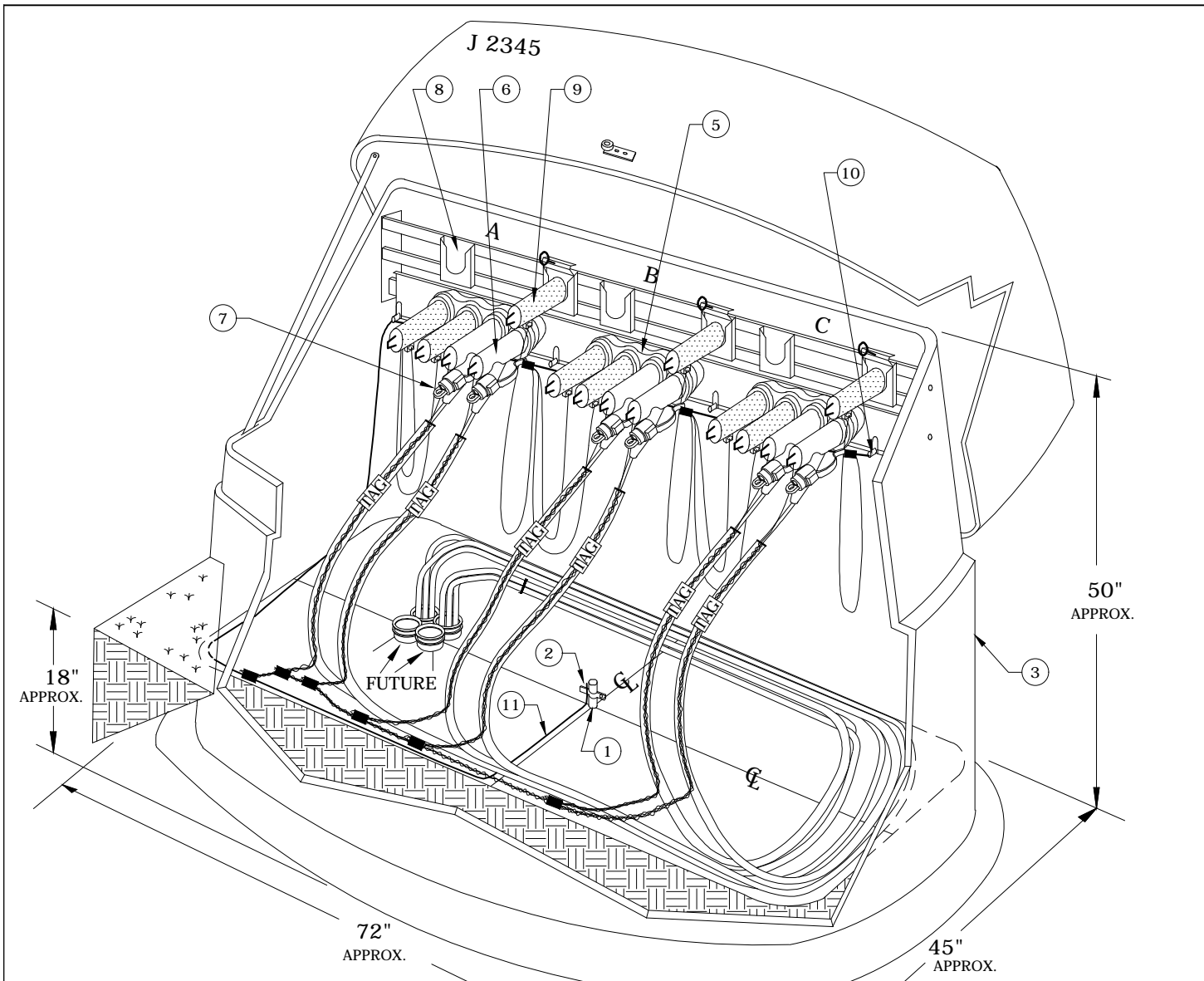
Rev 4: Changed to Voltage-reset fault indicators and added equipment lock.



CONSTRUCTION STANDARDS
 PRIMARY JUNCTION BOX
 SINGLE PHASE

REVISIONS			
NO.	DATE	ENGR	OPS
1	2/23/00	HWH	MA
2	9/23/04	LB	AH
3	12/29/04	LB	AH
4	4/29/09	CM	AH

APP: JEH	SECTION
DATE: 2/22/00	1500



NOTES:

1. TYPICAL ELBOW ARRANGEMENT IS SHOWN.
2. DO NOT PUT DIRT INSIDE JUNCTION BOX. SPACE IS REQUIRED FOR CABLE SLACK AND OPERATING CLEARANCE.
3. LEAVE CABLE SLACK FOR FUTURE OPERATIONS.

LEGEND:

- FAULT INDICATOR
- NORMALLY OPEN (ON STAND OFF BRACKET)

Rev 3: Changed to Voltage-reset fault indicators and added equipment lock.

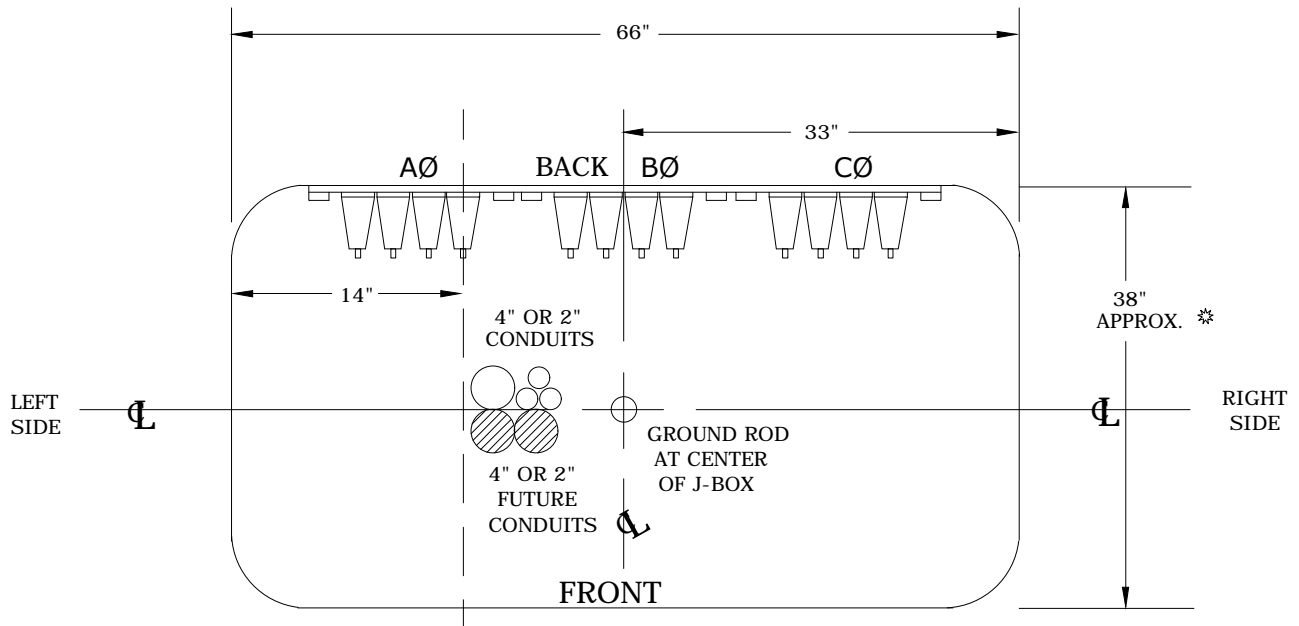
UJM4	UJM41	UJM42	UJM43	UJM44	UJM45	UJM46	UJM47	UJM48	UJM49

ITEM	MATERIAL LIST DESCRIPTION	QTY	S/N
1	Ground Rod 5/8" x 8'	1	1124
2	Clamp, Ground Rod, Small	1	281
3	Junction Box, 3Ø	1	2047
4	Equipment Lock, UG	1	837

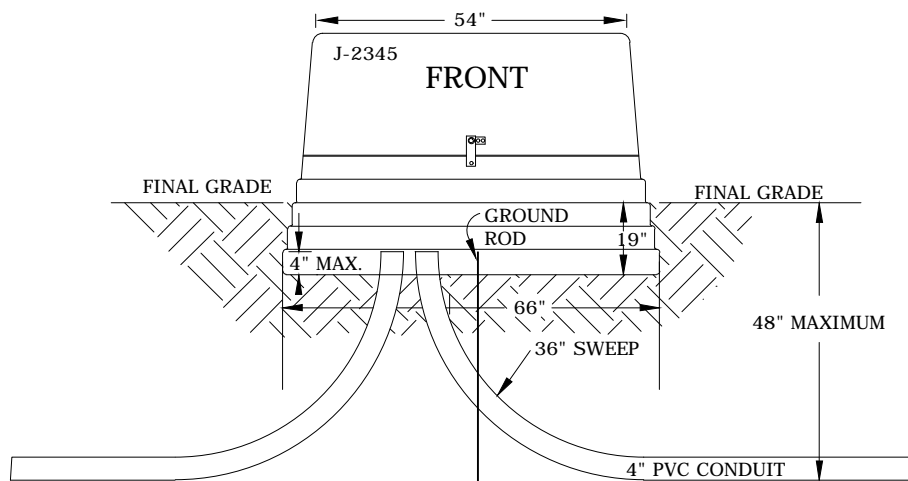


CONSTRUCTION STANDARDS
PRIMARY JUNCTION BOX
THREE PHASE

REVISIONS			
REV	DATE	ENGR	OPS
0	2/23/00	HWH	MA
1	9/23/04	LB	AH
2	12/29/04	LB	AH
3	4/29/09	CM	AH



PLAN VIEW 3-PHASE J-BOX



PRIMARY J-BOX CONDUIT ARRANGEMENT

Rev 3: Changed to Voltage-reset fault indicators and added equipment lock.



CONSTRUCTION STANDARDS
 PRIMARY JUNCTION BOX
 THREE PHASE

REVISIONS			
NO.	DATE	ENGR	OPS
0	2/23/00	HWH	MA
1	9/23/04	LB	AH
2	12/29/04	LB	AH
3	4/29/09	CM	AH

PAGE:
2 of 2

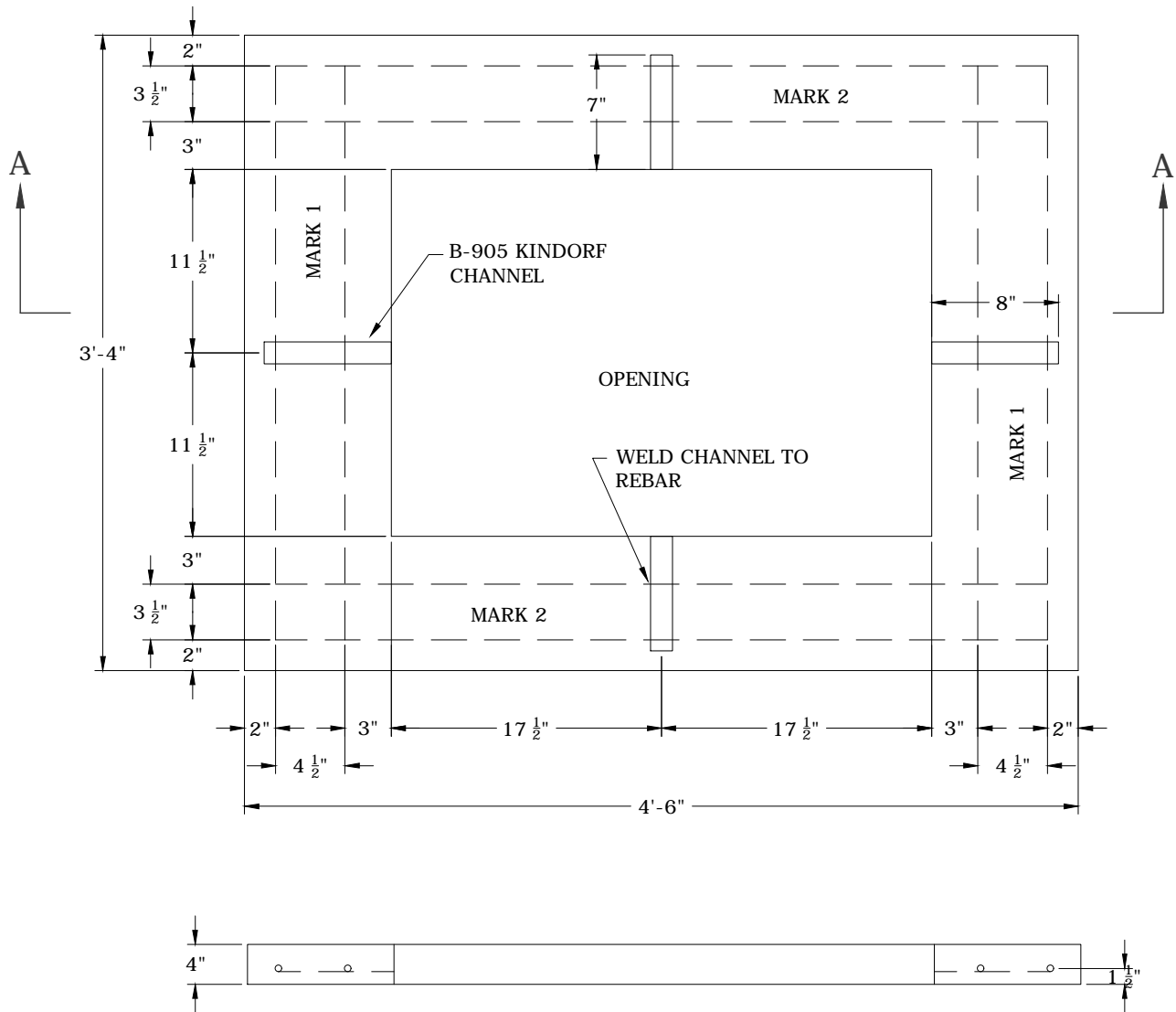
UJ3

CAD FILE:
UJ3

APP: AH
DATE: 2/22/00

SECTION
1500

PLAN



SECTION "A-A"

REINFORCING SCHEDULE				
MARK	NO.	SIZE	LENGTH	REMARKS
1	4	3/8"	3'-0"	STRAIGHT
2	4	3/8"	4'-2"	STRAIGHT

NOTE:

ALL CONCRETE SHALL BE 1-2-4 AND HAVE A SLUMP OF 4" TO 6"
 REINFORCING SHALL CONFORM TO A.S.T.M. DESIGNATION A15 AND A305.
 TROWEL SMOOTH SURFACES AND BRUSH FINISH. ROUND ALL EDGES,



CONSTRUCTION STANDARDS
 PRIMARY 3Ø PADMOUNT
 JUNCTION BOX PAD

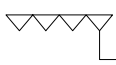

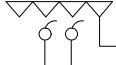
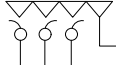

PAGE:
1 of 1




UJ5

CAD FILE:
UJ5

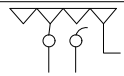
REVISIONS			
NO.	DATE	ENGR	OPS
0	6/13/02		
△ REDRAWN IN CAD			
APP:	ELM	SECTION	
DATE:	1/31/80	1500	

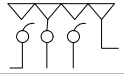
Rev 3: Changed to Voltage-reset fault indicators.

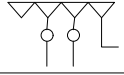
ITEM NO.	DESCRIPTION		UJM4	
			QTY.	S/N
5	Module, LBC4 w/o Brkt.		1	901
6	Elbow, Loadbreak, 1/0, 200A, 175 mil		1	1312
9	Cap, Protective Insulated, 200A U.G.		3	265
10	Ground Lug		1	842
11	Conductor, Copper #4 SOL BSDC		20 ft	376
ITEM NO.	DESCRIPTION		UJM41	
			QTY.	S/N
5	Module, LBC4 w/o Brkt.		1	901
6	Elbow, Loadbreak, 1/0, 200A, 175 mil		2	1312
7	Voltage-Reset Fault Indicator, 400A Trip, 1Ø UG		1	2694 *
8	Bushing, Standoff Insul. 200A		1	252
9	Cap, Protective Insulated, 200A U.G.		3	265
10	Ground Lug		1	842
11	Conductor, Copper #4 SOL BSDC		20 ft	376
ITEM NO.	DESCRIPTION		UJM42	
			QTY.	S/N
5	Module, LBC4 w/o Brkt.		1	901
6	Elbow, Loadbreak, 1/0, 200A, 175 mil		3	1312
7	Voltage-Reset Fault Indicator, 400A Trip, 1Ø UG		2	2694 *
8	Bushing, Standoff Insul. 200A		2	252
9	Cap, Protective Insulated, 200A U.G.		3	265
10	Ground Lug		1	842
11	Conductor, Copper #4 SOL BSDC		20 ft	376
ITEM NO.	DESCRIPTION		UJM43	
			QTY.	S/N
5	Module, LBC4 w/o Brkt.		1	901
6	Elbow, Loadbreak, 1/0, 200A, 175 mil		4	1312
7	Voltage-Reset Fault Indicator, 400A Trip, 1Ø UG		3	2694 *
8	Bushing, Standoff Insul. 200A		3	252
9	Cap, Protective Insulated, 200A U.G.		3	265
10	Ground Lug		1	842
11	Conductor, Copper #4 SOL BSDC		20 ft	376
ITEM NO.	DESCRIPTION		UJM44	
			QTY.	S/N
5	Module, LBC4 w/o Brkt.		1	901
6	Elbow, Loadbreak, 1/0, 200A, 175 mil		2	1312
7	Voltage-Reset Fault Indicator, 400A Trip, 1Ø UG		1	2694 *
9	Cap, Protective Insulated, 200A U.G.		2	265
10	Ground Lug		1	842
11	Conductor, Copper #4 SOL BSDC		20 ft	376

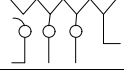
	CONSTRUCTION STANDARDS PRIMARY JUNCTION BOX SINGLE AND THREE PHASE MATERIAL LIST		REVISIONS			
				DATE	ENGR	OPS
			0	2/23/00	HWH	MA
		1	9/23/04	LB	AH	
		2	12/29/04	LB	AH	
		3	4/29/09	CM	AH	
						
PAGE: 1 of 2	UJM		CAD FILE: UJM	APP: JEH	SECTION 1500	
			DATE: 2/22/00			

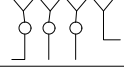
Rev 3: Changed to Voltage-reset fault indicators.




ITEM NO.	DESCRIPTION		UJM45	
			QTY.	S/N
5	Module, LBC4 w/o Brkt.		1	901
6	Elbow, Loadbreak, 1/0, 200A, 175 mil		3	1312
7	Voltage-Reset Fault Indicator, 400A Trip, 1Ø UG		2	2694 *
8	Bushing, Standoff Insul. 200A		1	252
9	Cap, Protective Insulated, 200A U.G.		2	265
10	Ground Lug		1	842
11	Conductor, Copper #4 SOL BSDC		20 ft	376

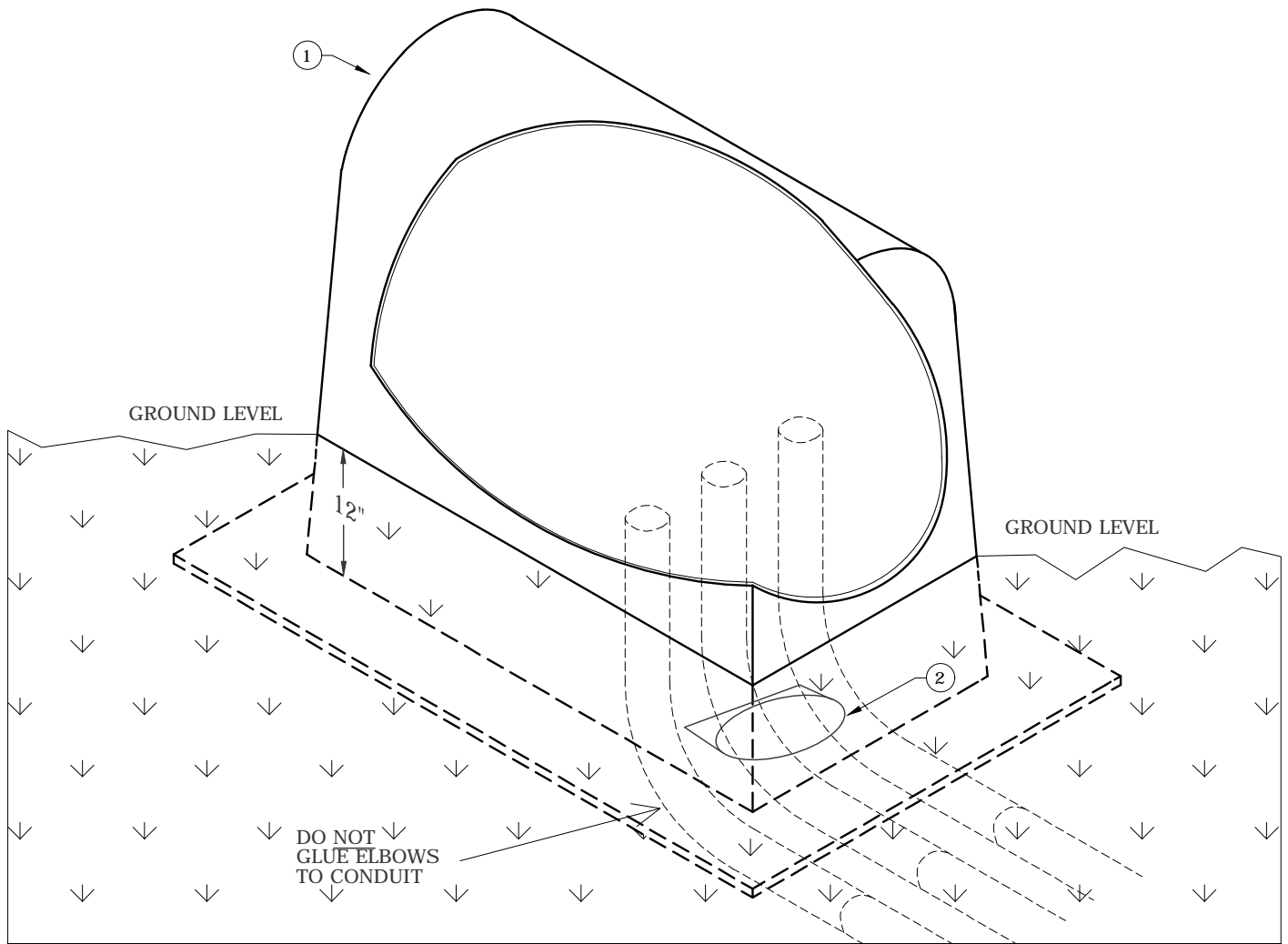
ITEM NO.	DESCRIPTION		UJM46	
			QTY.	S/N
5	Module, LBC4 w/o Brkt.		1	901
6	Elbow, Loadbreak, 1/0, 200A, 175 mil		4	1312
7	Voltage-Reset Fault Indicator, 400A Trip, 1Ø UG		3	2694 *
8	Bushing, Standoff Insul. 200A		2	252
9	Cap, Protective Insulated, 200A U.G.		2	265
10	Ground Lug		1	842
11	Conductor, Copper #4 SOL BSDC		20 ft	376

ITEM NO.	DESCRIPTION		UJM47	
			QTY.	S/N
5	Module, LBC4 w/o Brkt.		1	901
6	Elbow, Loadbreak, 1/0, 200A, 175 mil		3	1312
7	Voltage-Reset Fault Indicator, 400A Trip, 1Ø UG		2	2694 *
9	Cap, Protective Insulated, 200A U.G.		1	265
10	Ground Lug		1	842
11	Conductor, Copper #4 SOL BSDC		20 ft	376

ITEM NO.	DESCRIPTION		UJM48	
			QTY.	S/N
5	Module, LBC4 w/o Brkt.		1	901
6	Elbow, Loadbreak, 1/0, 200A, 175 mil		4	1312
7	Voltage-Reset Fault Indicator, 400A Trip, 1Ø UG		3	2694 *
8	Bushing, Standoff Insul. 200A		1	252
9	Cap, Protective Insulated, 200A U.G.		1	265
10	Ground Lug		1	842
11	Conductor, Copper #4 SOL BSDC		20 ft	376

ITEM NO.	DESCRIPTION		UJM49	
			QTY.	S/N
5	Module, LBC4 w/o Brkt.		1	901
6	Elbow, Loadbreak, 1/0, 200A, 175 mil		4	1312
7	Voltage-Reset Fault Indicator, 400A Trip, 1Ø UG		3	2694 *
10	Ground Lug		1	842
11	Conductor, Copper #4 SOL BSDC		20 ft	376

	CONSTRUCTION STANDARDS			REVISIONS				
	PRIMARY JUNCTION BOX SINGLE AND THREE PHASE MATERIAL LIST				DATE	ENGR	OPS	
				0	2/23/00	HWH	MA	
				1	9/23/04	LB	AH	
			2	12/29/04	LB	AH		
			3	4/29/09	CM	AH		
								
PAGE: 2 of 2	UJM		CAD FILE: UJM	APP: JEH	SECTION 1500			
			DATE: 2/22/00					



MATERIAL LIST

ITEM	DESCRIPTION	QTY.	S/N
1	CABLE LOOP ENCLOSURE	1	1821
2	MARKER, UG, FULL RANGE, DISC	1	2210

NOTES:

1. BURY APPROXIMATELY ONE FOOT OF THE ENCLOSURE.
2. CONDUITS SHALL BE BURIED 42" TO 48" DEEP UNLESS OTHERWISE APPROVED BY CPU.
3. THE DISC MARKER IS TO BE INSTALLED FLAT WITH THE INSTRUCTIONS FACING UP.
4. THE DISC SHOULD BE PLACED IN RADIUS OF ELBOW.
5. CPU HAS THE LOCATOR FOR FINDING THESE MARKERS.
6. THE MARKERS ARE REUSABLE.
7. LOOP ENCLOSURES AND MARKER DISCS PROVIDED BY CPU.

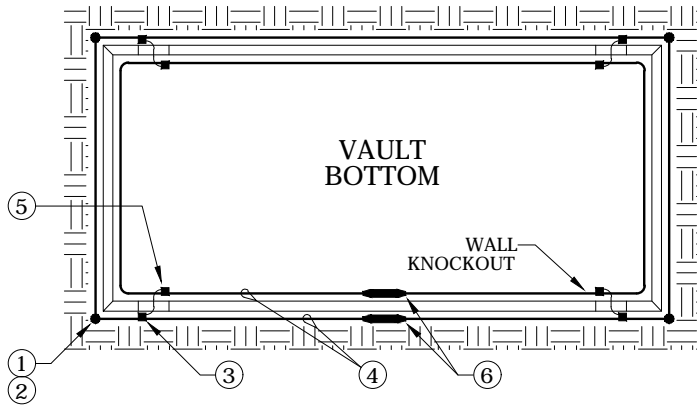
REV 1 - MERGED WITH STD. UBM AND UPDATED FOR ALL-CONDUIT SYSTEM.



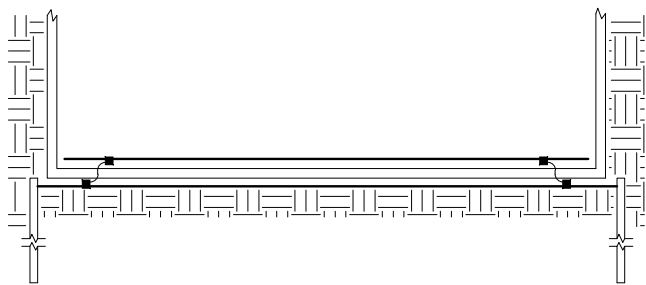
CONSTRUCTION STANDARDS
LOOP ENCLOSURE

REVISIONS			
DATE	ENGR	OPS	
9/23/04	LB	AH	0
12/29/04	LB	AH	1

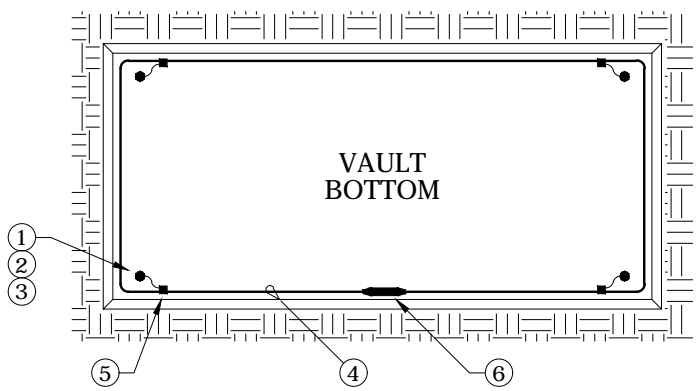
PAGE:	CAD FILE:	APP:	SECTION
1 of 1	ULE	KP	1500
		DATE:	



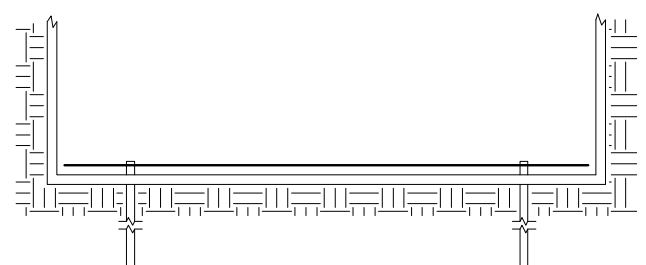
INSTALL GROUND RODS AND OUTSIDE 2/0 COPPER BEFORE VAULT IS INSTALLED. FEED 2/0 TAPS FROM OUTSIDE GROUND THROUGH VAULT WALL KNOCKOUTS.



FOR NEW VAULTS UVG-1



CUT GROUND RODS IN HALF. DRIVE ONE HALF. COUPLE ON SECOND HALF AND DRIVE SO THAT ONLY THE CLAMP IS EXPOSED ABOVE THE FLOOR.



FOR EXISTING VAULTS UVG-2



CONSTRUCTION STANDARDS
 UNDERGROUND VAULT
 GROUNDING SYSTEM

REVISIONS			
Δ	DATE	ENGR	OPS
0	2/23/00	HWH	MA
Δ			
APP:	JEH	SECTION	
DATE:	2/22/00	1500	