

Vancouver Service Center:
1200 Fort Vancouver Way
P.O. Box 8900
Vancouver, Washington 98668

Orchards Service Center:
8600 NE 117th Avenue
Vancouver, Washington 98662

Internet home page:
<http://www.clarkpud.com>

E-mail:
mailbox@clarkpud.com

For regular business:
360-992-3000



printed on recycled paper

TREES & SHRUBS

Planting them safely around electrical equipment

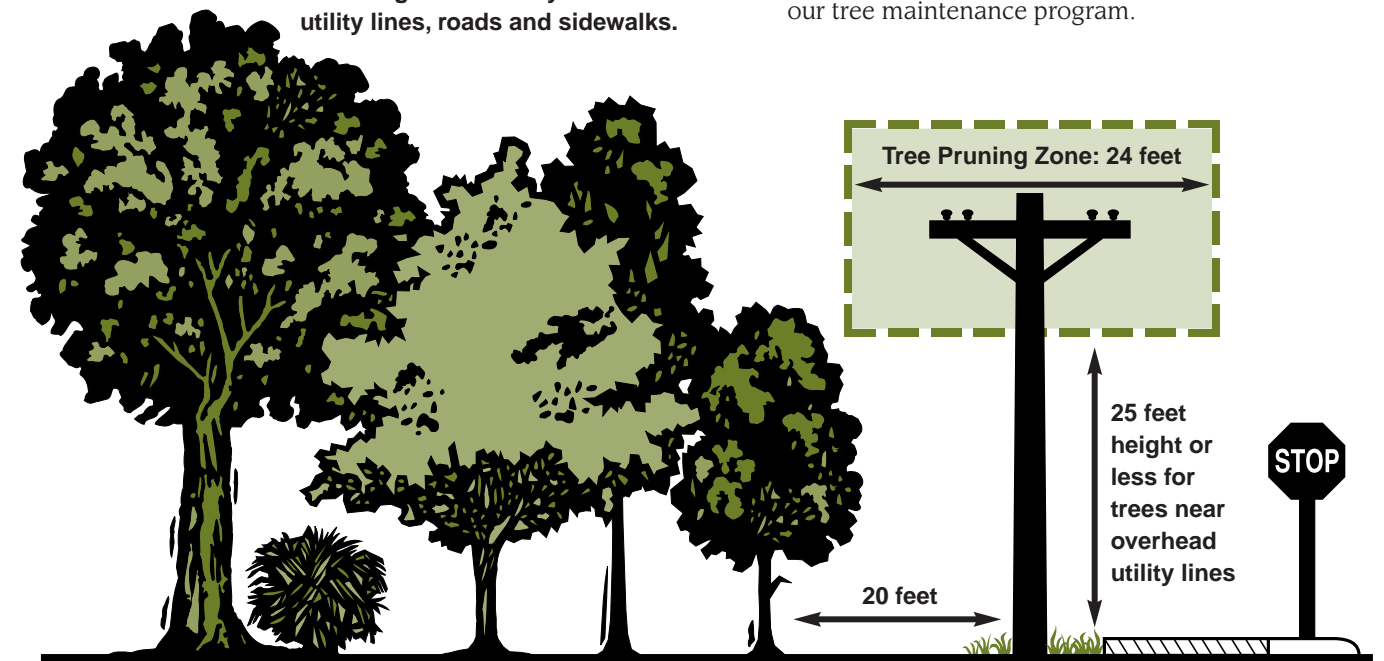


Clark Public Utilities has thousands of miles of overhead power lines to maintain. One of the biggest obstacles we face is trees — trees that are too tall and located too close to power lines. As beautiful as those trees are, they cause about 25 percent of all outage hours in Clark County. You can do your part to prevent these kinds of problems by carefully considering your landscaping choices. We've designed this brochure to help you.

PLANTING NEAR OVERHEAD LINES

- ◆ Please don't plant trees under power lines unless they will grow to be no more than 25 feet tall. Small, round trees are best. Flowering trees, such as dogwoods and lilacs, are excellent choices. Trees with a single center trunk usually grow to lofty heights and shouldn't be planted near or under power lines. Examples of these "too tall" trees include large evergreens, poplars, maples, chestnuts and oaks.
- ◆ Please plant trees and shrubs at least six feet away from utility poles — even farther if the tree or shrub is particularly bushy. Our crews need access to those poles, and trees and shrubs that are too close may be trimmed in the course of their work.
- ◆ Look for trees at your local nursery that are tagged with the TreeSmart logo — it indicates the trees are appropriate for planting near power lines. If you're not sure the tree you're considering meets the TreeSmart criteria, ask your landscape professional. You also can visit our website at www.clarkpud.com to get a recommended tree list and learn more about our tree maintenance program.

Plant larger trees away from utility lines, roads and sidewalks.



Look for the TreeSmart symbol

When shopping for trees at local nurseries, look for this symbol — it indicates the trees are appropriate to plant near power lines. Trees that have this tag will grow no higher than 25 feet, so they won't threaten reliable utility service. They also need little pruning and maintenance. If you don't see this TreeSmart symbol at your area nursery, ask for information about appropriate trees to plant near power lines.



CALL BEFORE YOU DIG

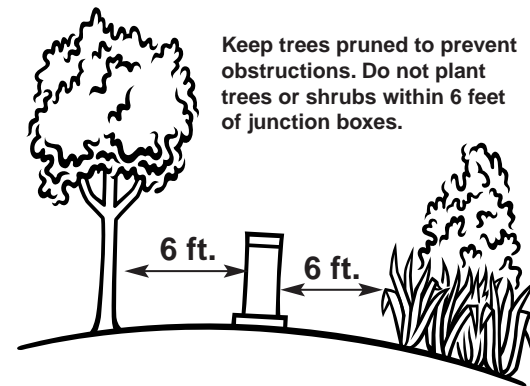
All kinds of utility lines run underground, including electric, cable, water and gas lines. Every year, dozens of Clark County residents accidentally dig into those lines and cause outages. It's an expensive mistake, since those who do the digging have to pay for the repairs. There's an easy way to prevent this problem. Just call 1-800-553-4344 two working days before you're planning to do any digging, and representatives of each utility will come and mark the locations of their underground lines for you within two working days. This is a FREE service.

CALL BEFORE YOU DIG
1-800-553-4344

Trenching near trees can cause problems, but with adequate precautions most damage and tree loss can be prevented. In most tree species, 85 percent of the roots are within the first 18 inches of topsoil. Try to keep ditchlines and trenches as far from trees as practical, and dig no closer than the branches' drip-line.

PLANTING NEAR UNDERGROUND LINES

If there are no overhead power lines in your neighborhood, you probably have a green metal utility box mounted on a small concrete or fiberglass "pad" in your yard. This is a junction box, and our crews need access to it to repair and maintain your underground electric service. Please don't plant shrubs or trees, put in a rock garden or build a fence within six feet of these boxes. If these "obstructions" are too close, they may be damaged when crews come to open the junction box.



OUR TREE MANAGEMENT PROGRAM

Falling trees and limbs, branches growing into power lines and other tree-related problems cause a significant number of outages in Clark County. That's why Clark Public Utilities operates an aggressive year-round tree-pruning program based on guidelines promoted by the International Society of Arboriculture and the National Arbor Day Foundation.

Our crews prune trees back far enough so the power lines are free of tree contact until the next pruning cycle. We also consider the shape and size of each tree before we trim, as well as the proximity to the power line.

Along rural and heavily wooded lines, we side trim or remove trees to establish a 10-foot right-of-way corridor for the power lines. We use side trimming and directional trimming in residential areas to prune trees away from power lines. These techniques involve removing limbs and redirecting future growth away from the power lines.

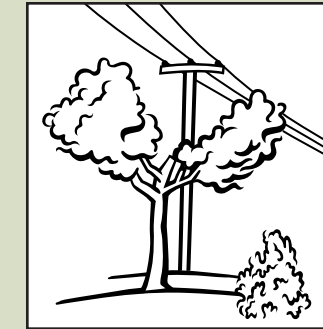
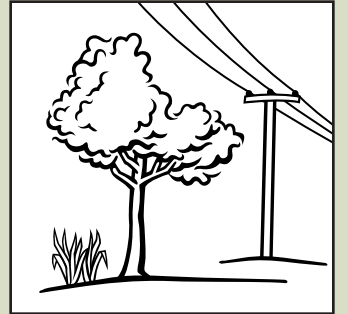
We know that maintaining trees for power line clearance doesn't always improve their appearance, but these pruning methods help protect the tree's health and minimize regrowth. Selectively pruning branches retains as much of the tree's natural crown or leaf canopy as possible, a much healthier option for the tree than older, obsolete "topping" methods.

We try to prevent as many tree-related outages as we can, but we need your help. If you see trees growing into power lines, please call us at (360) 992-3000 — we'll come and prune the trees at no charge.

TREE PRUNING

Deciduous Side Pruning

Branches are left to grow away from the wires.

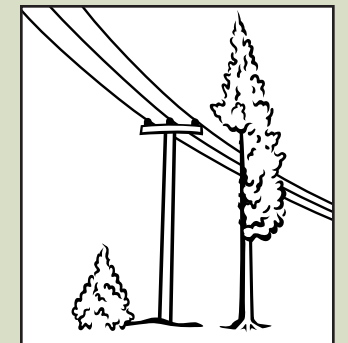


Deciduous Directional Pruning

Branches are left to grow away from the wires.

Evergreen Side Pruning

Side branches are trimmed to the branch collar of the trunk.



TREES & SHRUBS